

**BACK TO  
SCHOOL**  
2020 - 2021  
UNIVERSITY

# CAMPUS SAFETY ESSENTIALS

Posters • Signs • Labels • Tapes • Floor Signs

**DO YOUR PART**  
Please wear a mask and  
practice social distancing.



**STAIRS  
UP  
ONLY**

**NOTICE**  
OCCUPANCY  
LIMITED TO  
\_\_\_\_ PEOPLE



## Table of Contents:

Illness Prevention Signs .....4-8

**Key Products** Illness Prevention Posters .....9-13

**Key Products** Banners.....14

Labels .....15-16

**Key Products** Social Distancing Floor Markings .... 17-21

Floor Marking Tapes & Shapes .....22-25

Temporary Directional Signage.....26-28

Work Station Virus Protection.....29

Acrylic PPE Dispensers .....30

Biohazard.....31

**Key Products** Signage Kits .....32-33

COVID-19 Tyvek Wristbands .....34

### How to Wear Cloth Face Coverings\*

Cloth face coverings should—

- Fit snugly but comfortably against the side of the face
- Secure with ties or ear loops
- Include multiple layers of fabric
- Allow for unrestricted
- Be able to be laundered and machine dried without damage or change to shape

### CDC on Homemade Cloth Face Coverings

CDC recommends wearing cloth face coverings in public settings where other social distancing measures are difficult to maintain, especially in areas of significant community-based transmission. CDC also advises the use of simple cloth face coverings to slow the spread of the virus and help people who may have the virus and do not know it from transmitting it to others.

### Should cloth face coverings be washed or otherwise cleaned regularly?

Yes. They should be routinely washed depending on the frequency of use.

### How does one safely sterilize/clean a cloth face covering?

A washing machine should suffice in properly washing a cloth face covering.

### How does one safely remove a used cloth face covering?

Individuals should be careful not to touch their eyes, nose, and mouth when removing their cloth face covering and wash hands immediately after removing.

\*Source CDC.gov



# Go Beyond Standard...

# CUSTOMIZE IT!

Design products that meet **YOUR** needs, free of charge. Choose from a range of quality materials sourced in the U.S.A., protected with our one of a kind Sign Muscle® coating to make it last.

- No charge for artwork
- Quick turnaround time
- Made in the U.S.A.
- No minimums
- Free Sign Muscle® protective coating



**1** FROM IDEA



**2** TO PROOF



**3** TO REALITY



## Signs

Post signs in key locations identifying the importance of, and best tips for hand washing, as well as other safeguards for preventing illness.

### Directional



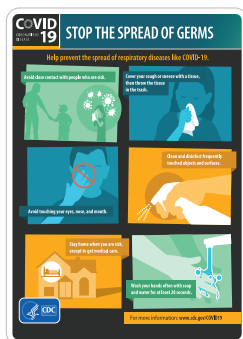
RB 10 x 14 M515RB  
PSV 10 x 14 M515PB



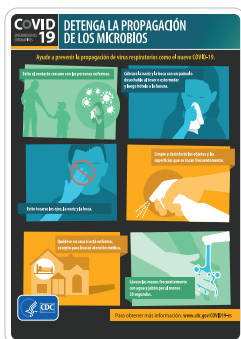
RB 10 x 14 M516RB  
PSV 10 x 14 M516PB



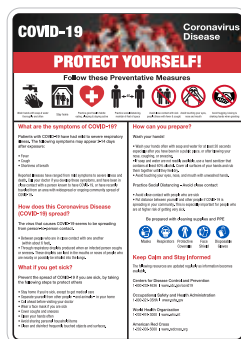
### Visitor Precautions



PBR 14 x 10 M0139PBR  
RB 14 x 10 M0139RB



PBR 14 x 10 M0140PBR  
RB 14 x 10 M0140RB



PBR 14 x 10 M0141PBR  
RB 14 x 10 M0141RB



PBR 14 x 10 M0142PBR  
RB 14 x 10 M0142RB

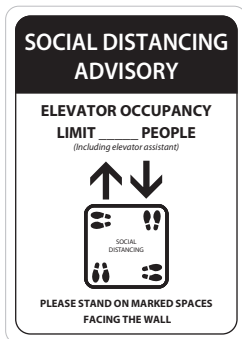
### Social Distancing



PBR 14 x 10 M611PBR  
RB 14 x 10 M611RB



PSV 14 x 10 M615PB  
RB 14 x 10 M615RB



PSV 14 x 10 M616PB  
RB 14 x 10 M616RB



AL 10 x 14 NGA38AB  
PSV 10 x 14 NGA38PB  
RB 10 x 14 NGA38RB

#### Material Reference Chart:

<b>PSV</b>	Pressure Sensitive Vinyl
<b>PBR</b>	Removable Adhesive Backed Vinyl
<b>RB</b>	Rigid Plastic
<b>AL</b>	Aluminum







## Room Capacity



RB 10 x 14 N524RB  
PSV 10 x 14 N524PB



RB 10 x 14 N525RB  
PSV 10 x 14 N525PB



RB 10 x 14 N526RB  
PSV 10 x 14 N526PB



RB 10 x 14 N527RB  
PSV 10 x 14 N527PB



RB 10 x 14 N528RB  
PSV 10 x 14 N528PB



RB 10 x 14 N529RB  
PSV 10 x 14 N529PB



RB 10 x 14 N530RB  
PSV 10 x 14 N530PB



RB 10 x 14 N531RB  
PSV 10 x 14 N531PB



RB 10 x 14 N532RB  
PSV 10 x 14 N532PB

### Material Reference Chart:

PSV Pressure Sensitive Vinyl  
RB Rigid Plastic



RB 10 x 14 N534RB  
PSV 10 x 14 N534PB



## Hand Washing



PSV 10 x 7 WH1P  
PSV 14 x 10 WH1PB  
PBR 14 x 10 WH1PBR  
PBR 10 x 7 WH1PR  
RB 14 x 10 WH1RB



PSV 10 x 7 WH2P  
PSV 14 x 10 WH2PB  
PBR 14 x 10 WH2PBR  
PBR 10 x 7 WH2PR  
RB 14 x 10 WH2RB



PSV 10 x 7 WH3P  
PSV 14 x 10 WH3PB  
PBR 14 x 10 WH3PBR  
PBR 10 x 7 WH3PR  
RB 14 x 10 WH3RB



PSV 10 x 7 WH4P  
PSV 14 x 10 WH4PB  
PBR 14 x 10 WH4PBR  
PBR 10 x 7 WH4PR  
RB 14 x 10 WH4RB



PSV 14 x 10 N520PB  
RB 14 x 10 N520RB  
PBR 14 x 10 N520PBR



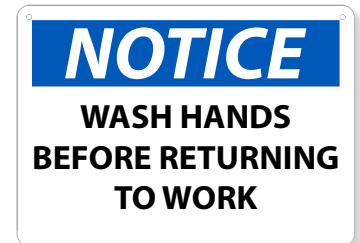
PSV 7 x 10 WH6P  
PSV 10 x 14 WH6PB  
PBR 10 x 14 WH6PBR  
PBR 7 x 10 WH6PR  
RB 10 x 14 WH6RB



PSV 7 x 10 WH5P  
PSV 10 x 14 WH5PB  
PBR 10 x 14 WH5PBR  
PBR 7 x 10 WH5PR  
RB 10 x 14 WH5RB



RB 10 x 14 N247RB  
PSV 10 x 14 N247PB  
AL 10 x 14 N247AB



AL 10 x 14 N43AB  
RB 10 x 14 N43RB  
PSV 10 x 14 N43PB



PSV 12 x 12 M623P  
PBR 12 x 12 M623PR



PSV 12 x 12 M625P  
PBR 12 x 12 M625PR

### Material Reference Chart:

<b>PSV</b>	Pressure Sensitive Vinyl
<b>PBR</b>	Removable Adhesive Backed Vinyl
<b>RB</b>	Rigid Plastic
<b>AL</b>	Aluminum



## Entrance Guidelines



AL 14 x 10 NGA39AB  
PSV 14 x 10 NGA39PB  
RB 14 x 10 NGA39RB



AL 14 x 10 ESN523AB  
PSV 14 x 10 ESN523PB  
RB 14 x 10 ESN523RB



PBR 14 x 10 ESN520PBR  
RB 14 x 10 ESN520RB  
AL 14 x 10 ESN520AB



PBR 14 x 10 M0155PBR  
RB 14 x 10 M0155RB



PBR 14 x 10 M0155PBRSP  
RB 14 x 10 M0155RBSP



AL 14 x 10 M614AB  
PSV 14 x 10 M614PB  
RB 14 x 10 M614RB



AL 10 x 14 N523AB  
PSV 10 x 14 N523PB  
RB 10 x 14 N523RB



AL 10 x 14 SPNGA37AB  
PBR 10 x 14 SPNGA37PBR  
RB 10 x 14 SPNGA37RB

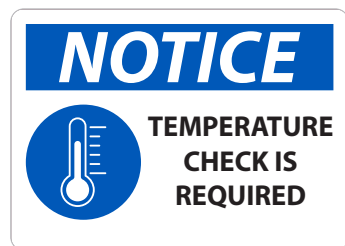


AL 10 x 14 NGA37AB  
PBR 10 x 14 NGA37PBR  
RB 10 x 14 NGA37RB

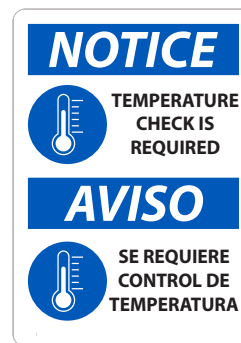
## Temperature Check



AL 10 x 14 M613AB  
PSV 10 x 14 M613PB  
RB 10 x 14 M613RB



AL 10 x 14 N522AB  
PSV 10 x 14 N522PB  
RB 10 x 14 N522RB



AL 14 x 10 ESN522AB  
PSV 14 x 10 ESN522PB  
RB 14 x 10 ESN522RB



RB 14 x 10 M621RB  
PSV 14 x 10 M621PB

### Material Reference Chart:

<b>PSV</b>	Pressure Sensitive Vinyl
<b>PBR</b>	Removable Adhesive Backed Vinyl
<b>RB</b>	Rigid Plastic
<b>AL</b>	Aluminum

## Facility Protocol



PSV 7 x 10 N519P  
PSV 10 x 14 N519PB  
PBR 10 x 14 N519PBR  
PBR 7 x 10 N519PR



PBR 10 x 14 N521PBR  
RB 10 x 14 N521RB



PSV 7 x 10 N518P  
PSV 10 x 14 N518PB  
PBR 10 x 14 N518PBR  
PBR 7 x 10 N518PR



PSV 14 x 10 ESN518PB  
PBR 14 x 10 ESN518PBR  
AL 14 x 10 ESN518AB  
RB 14 x 10 ESN518RB



PSV 14 x 10 ESN519PB  
PBR 14 x 10 ESN519PBR  
AL 14 x 10 ESN519AB  
RB 14 x 10 ESN519RB

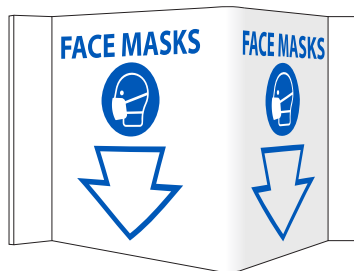
### Material Reference Chart:

<b>PSV</b>	Pressure Sensitive Vinyl
<b>PBR</b>	Removable Adhesive Backed Vinyl
<b>RB</b>	Rigid Plastic
<b>AL</b>	Aluminum

## 3D Wall Signs



VS54



VS55

### DESCRIPTION

6 x 9 Rigid 3MM Vinyl



## Don't see what you need?

Our Customer Support Team is here to help you every step of the way.

### Reach out today to get started!



## Posters

Provide daily reminders to help reduce the transmission of communicable diseases.

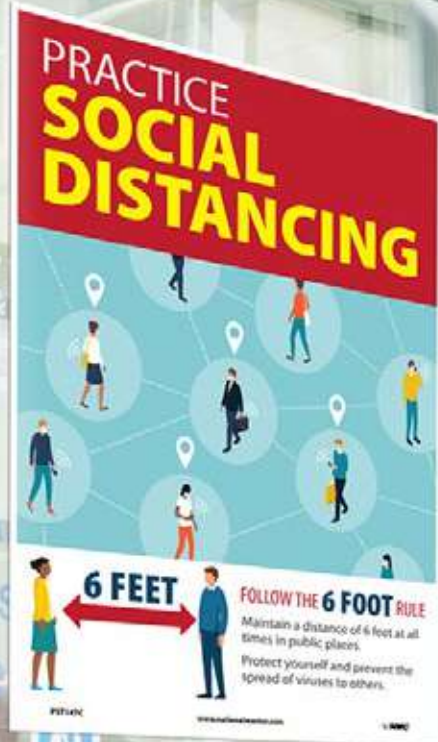
### Social Distancing



HDP 24 x 18 PST148  
UV 18 x 12 PST148C  
PP 18 x 12 5/pk PST148PP



HDP 24 x 18 PST150  
UV 18 x 12 PST150C  
PP 18 x 12 5/pk PST150PP



HDP 24 x 18 PST147  
UV 18 x 12 PST147C  
PP 18 x 12 5/pk PST147PP

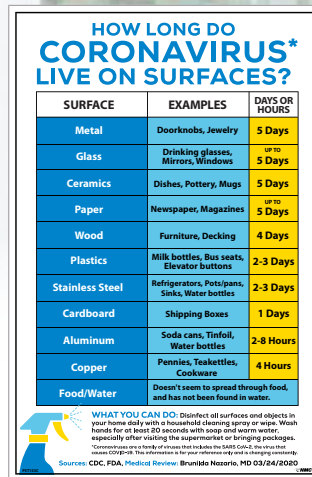
### Illness Prevention



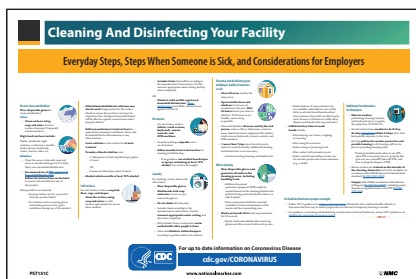
HDP 24 x 18 PST155  
UV 18 x 12 PST155C  
PP 18 x 12 5/pk PST155PP



HDP 24 x 18 PST155SP  
UV 18 x 12 PST155CSP  
PP 18 x 12 5/pk PST155PPSP



HDP 24 x 18 PST153  
UV 18 x 12 PST153C  
PP 18 x 12 5/pk PST153PP



HDP 18 x 24 PST151  
UV 12 x 18 PST151C  
PP 12 x 18 5/pk PST151PP

### Material Reference Chart:

**HDP** Heavy-Duty Poster Paper  
**UV** Unrippable Vinyl  
**PP** Poster Paper



# STOP THE SPREAD OF GERMS

**Help prevent the spread of respiratory risks COVID-19.**

**Avoid close contact with people who are sick.**



**Cover your cough or sneeze with a tissue, then throw the tissue in the trash.**



**Wash your hands often with soap and water for at least 20 seconds.**



**Clean and disinfect frequently touched objects and surfaces.**



**Avoid touching your eyes, nose, and mouth.**



**Stay home when you are sick, except to get medical care.**



**Wash your hands often with soap and water for at least 20 seconds.**



**For more information, visit [www.cdc.gov/covid19](https://www.cdc.gov/covid19)**



PEP/PMC

[www.cdc.gov/covid19](https://www.cdc.gov/covid19)



HDP	24 x 18	PST139
UV	18 x 12	PST139C
PP	18 x 12 5/pk	PST139PP



HDP	24 x 18	PST140
UV	18 x 12	PST140C
PP	18 x 12 5/pk	PST140PP



HDP	24 x 18	PST142
UV	18 x 12	PST142C
PP	18 x 12 5/pk	PST142PP



HDP	24 x 18	PST142SP
UV	18 x 12	PST142CSP
PP	18 x 12 5/pk	PST142PPSP



HDP	24 x 18	PST143
UV	18 x 12	PST143C
PP	18 x 12 5/pk	PST143PP



HDP	24 x 18	PST143SP
UV	18 x 12	PST143CSP
PP	18 x 12 5/pk	PST143PPSP



HDP	24 x 18	PST144
UV	18 x 12	PST144C
PP	18 x 12 5/pk	PST144PP



HDP	24 x 18	PST144SP
UV	18 x 12	PST144CSP
PP	18 x 12 5/pk	PST144PPSP



HDP	24 x 18	PST141
UV	18 x 12	PST141C
PP	18 x 12 5/pk	PST141PP



HDP	24 x 18	PST149
UV	18 x 12	PST149C
PP	18 x 12 5/pk	PST149PP

<b>HDP</b>	Heavy-Duty Poster Paper
<b>UV</b>	Unrippable Vinyl
<b>PP</b>	Poster Paper

<b>HDP</b>	Heavy-Duty Poster Paper
<b>UV</b>	Unrippable Vinyl
<b>PP</b>	Poster Paper



## Mask/Face Covering



HDP 24 x 18 PST161  
UV 18 x 12 PST161C  
PP 18 x 12 5/pk PST161PP



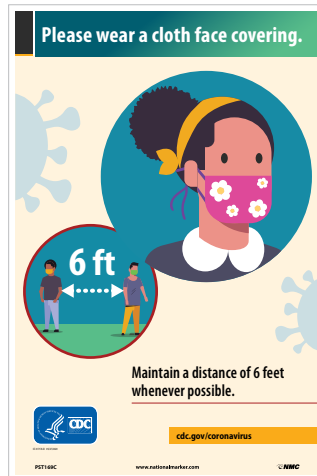
HDP 24 x 18 PST162  
UV 18 x 12 PST162C  
PP 18 x 12 5/pk PST162PP



HDP 24 x 18 PST168  
UV 18 x 12 PST168C  
PP 18 x 12 5/pk PST168PP



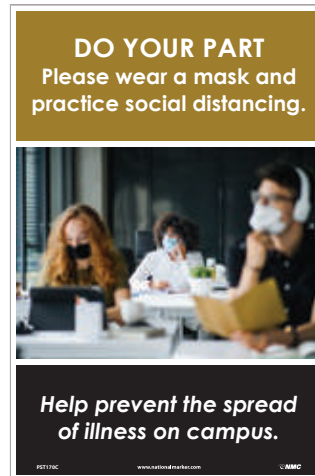
HDP 24 x 18 PST168SP  
UV 18 x 12 PST168CSP  
PP 18 x 12 5/pk PST168PPSP



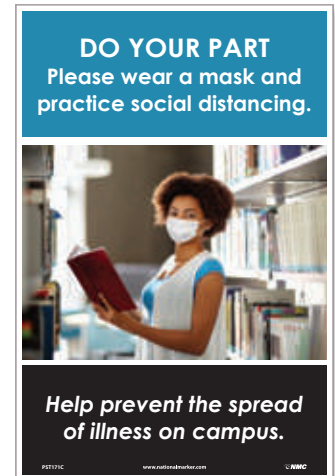
HDP 24 x 18 PST169  
UV 18 x 12 PST169C  
PP 18 x 12 5/pk PST169PP



HDP 24 x 18 PST169SP  
UV 18 x 12 PST169CSP  
PP 18 x 12 5/pk PST169PPSP



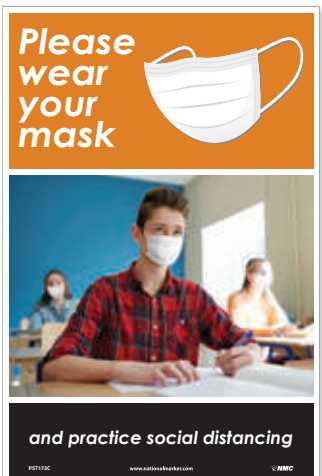
HDP 24 x 18 PST170  
UV 18 x 12 PST170C  
PP 18 x 12 5/pk PST170PP



HDP 24 x 18 PST171  
UV 18 x 12 PST171C  
PP 18 x 12 5/pk PST171PP



HDP 24 x 18 PST172  
UV 18 x 12 PST172C  
PP 18 x 12 5/pk PST172PP



HDP 24 x 18 PST173  
UV 18 x 12 PST173C  
PP 18 x 12 5/pk PST173PP

### Material Reference Chart:

HDP	Heavy-Duty Poster Paper
UV	Unrippable Vinyl
PP	Poster Paper

## Hand Washing



HDP 24 x 18 PST152  
UV 18 x 12 PST152C  
PP 18 x 12 5/pk PST152PP



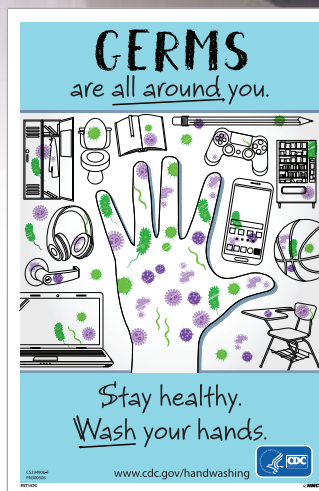
HDP 24 x 18 PST152SP  
UV 18 x 12 PST152CSP  
PP 18 x 12 5/pk PST152PPSP



HDP 24 x 18 PST156  
UV 18 x 12 PST156C  
PP 18 x 12 5/pk PST156PP



HDP 24 x 18 PST156SP  
UV 18 x 12 PST156CSP  
PP 18 x 12 5/pk PST156PPSP



HDP 24 x 18 PST157  
UV 18 x 12 PST157C  
PP 18 x 12 5/pk PST157PP



HDP 24 x 18 PST157SP  
UV 18 x 12 PST157CSP  
PP 18 x 12 5/pk PST157PPSP



HDP 18 x 24 PST137  
UV 12 x 18 PST137C  
PP 12 x 18 5/pk PST137PP



HDP 18 x 24 PST138  
UV 12 x 18 PST138C  
PP 12 x 18 5/pk PST138PP

### Material Reference Chart:

**HDP** Heavy-Duty Poster Paper  
**UV** Unrippable Vinyl  
**PP** Poster Paper



## Hand Washing



HDP 24 x 18 PST164  
UV 18 x 12 PST164C  
PP 18 x 12 5/pk PST164PP



HDP 24 x 18 PST164SP  
UV 18 x 12 PST164CSP  
PP 18 x 12 5/pk PST164PPSP



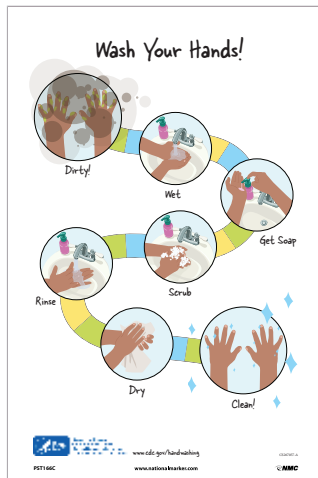
HDP 24 x 18 PST165  
UV 18 x 12 PST165C  
PP 18 x 12 5/pk PST165PP



HDP 24 x 18 PST165SP  
UV 18 x 12 PST165CSP  
PP 18 x 12 5/pk PST165PPSP



HDP 24 x 18 PST163  
UV 18 x 12 PST163C  
PP 18 x 12 5/pk PST163PP



HDP 24 x 18 PST166  
UV 18 x 12 PST166C  
PP 18 x 12 5/pk PST166PP



HDP 24 x 18 PST167  
UV 18 x 12 PST167C  
PP 18 x 12 5/pk PST167PP

### Material Reference Chart:

**HDP** Heavy-Duty Poster Paper  
**UV** Unrippable Vinyl  
**PP** Poster Paper



## Don't see what you need?

Our Customer Support Team is here to help you every step of the way.

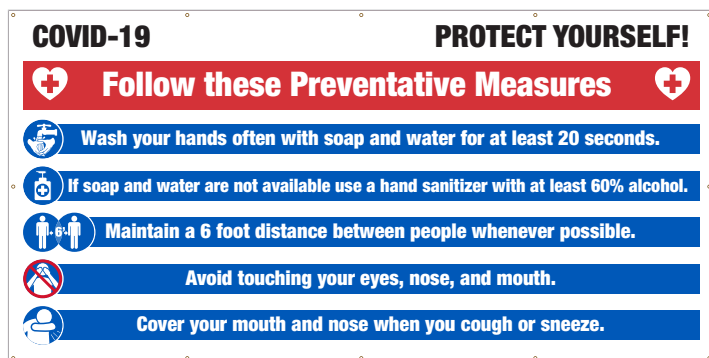
### Reach out today to get started!



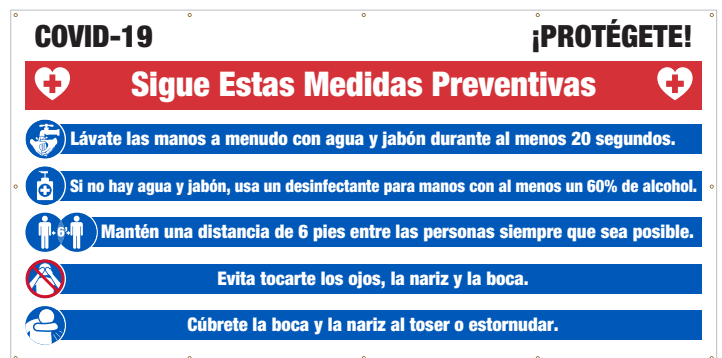
# COVID-19 Mesh Fence Banners

Keep students and staff informed and protected by conveying important COVID-19 safety information at all times.

- Durable mesh banner with reinforced grommets
- Mesh material allows for air flow
- Sized specifically for use on fencing



6' x 12' English BT61  
5' x 10' English BT561



6' x 12' Spanish SPBT61  
5' x 10' Spanish SPBT561



**CUSTOM LEGENDS AVAILABLE**  
Call us today to get started!







ISO674CL & ISO670CL Shown

# Labels, Door & Window Clings

**Display labels in high-traffic areas for increased awareness.**

Protect students and remind visitors and staff about safe practices on your campus. Labels are ideal for placement on door entrances or on restroom mirrors. Available with clear background for a clean professional look.

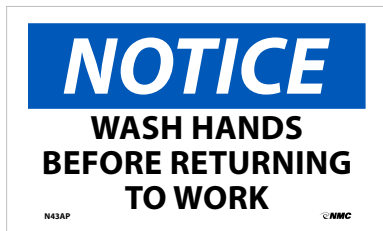
## Handwashing



PSV 3 x 5 WH4AP  
PBR 3 x 5 WH4APR



PSV 3 x 5 N362AP



PSV 3 x 5 N43AP  
PBR 3 x 5 N43APR

MATERIAL	QUANTITY
Pressure Sensitive Removable Vinyl (PBR)	5/Pk
Pressure Sensitive Vinyl (PSV)	5/Pk



2" Dia. ISO270AP  
2" Dia. Clear ISO270CL  
4" Dia. ISO470AP  
4" Dia. Clear ISO470CL  
6" Dia. ISO670AP  
6" Dia. Clear ISO670CL



2" Dia. ISO217AP  
4" Dia. ISO417AP  
6" Dia. ISO617AP

MATERIAL	DESCRIPTION
Pressure Sensitive Vinyl	2" Diameter, 10/Pk
Pressure Sensitive Vinyl	4" Diameter, 5/Pk
Pressure Sensitive Vinyl	6" Diameter, 5/Pk
Pressure Sensitive Vinyl, Clear	2" Diameter, Clear, 10/Pk
Pressure Sensitive Vinyl, Clear	4" Diameter, Clear, 5/Pk
Pressure Sensitive Vinyl, Clear	6" Diameter, Clear, 5/Pk

Clear versions are reverse printed, and can be placed on the interior of windows and glass doors, while being viewed from the other side.





## Social Distancing Guidance & Mask/Face Covering Labels



PSV 4" Dia. ISO471AP  
PSV 6" Dia. ISO671AP



PSV 4" Dia. ISO472AP  
PSV 6" Dia. ISO672AP



PSV 4" Dia. ISO473AP  
PSV 6" Dia. ISO673AP



PSV 4" Dia. ISO474AP  
PSV, Clear 4" Dia. ISO474CL  
PSV 6" Dia. ISO674AP  
PSV, Clear 6" Dia. ISO674CL



PSV 4" Dia. ISO475AP  
PSV, Clear 4" Dia. ISO475CL  
PSV 6" Dia. ISO675AP  
PSV, Clear 6" Dia. ISO675CL



PSV 4" Dia. ISO476AP  
PSV, Clear 4" Dia. ISO476CL  
PSV 6" Dia. ISO676AP  
PSV, Clear 6" Dia. ISO676CL

MATERIAL	DESCRIPTION
Pressure Sensitive Vinyl	4" Diameter, 5/Pk
Pressure Sensitive Vinyl	6" Diameter, 5/Pk
Pressure Sensitive Vinyl, Clear	4" Diameter, Clear, 5/Pk
Pressure Sensitive Vinyl, Clear	6" Diameter, Clear, 5/Pk

Clear versions are reverse printed, and can be placed on the interior of windows and glass doors, while being viewed from the other side.



# Social Distancing Floor Signs

Mark your campus and buildings to encourage social distancing with NMC's wide selection of adhesive backed, peel-and-stick floor signs.

Choose a material to suit your needs:

## TexWalk® Floor Signs



**0-6 MONTHS**

- Ideal for basic office and regular traffic
- Removable, leaves no residue
- May be used on low profile carpets
- Print protected with Sign Muscle® coating

## Temp-Step™ Non-Slip Floor Signs

**6-9 MONTHS**

- Ideal for basic office and steady traffic
- Removable, leaves no residue
- Non-slip surface

## Walk-On™ Anti-Skid Floor Signs

**9+ MONTHS**

- Ideal for heavy traffic and industrial applications
- Longer term indoor/short term outdoor use
- Aggressive adhesive
- Anti-skid surface



# Social Distancing Floor Signs



TexWalk® 11.75 x 11.75 WFS79TXYL  
Temp-Step™ 12 x 12 WFS79AYL  
Walk-On™ 12 x 12 WFS79YL



TexWalk® 11.75 x 11.75 WFS79TXRD  
Temp-Step™ 12 x 12 WFS79ARD  
Walk-On™ 12 x 12 WFS79RD



TexWalk® 11.75 x 11.75 WFS71TX  
Temp-Step™ 12 x 12 WFS71A  
Walk-On™ 12 x 12 WFS71



TexWalk® 11.75 x 11.75 WFS73TX  
Temp-Step™ 12 x 12 WFS73A  
Walk-On™ 12 x 12 WFS73



TexWalk®	WFS85TXBK	WFS85TXBL	WFS85TXGR	WFS85TXRD	WFS85TXYL	6 x 4	10/Pk
Temp-Step™	WFS85ABK	WFS85ABL	WFS85AGR	WFS85ARD	WFS85AYL	6 x 4	10/Pk
Walk-On™	WFS85BK	WFS85BL	WFS85GR	WFS85RD	WFS85YL	6 x 4	10/Pk



# Social Distancing Floor Signs

8" DIA.



TexWalk® WFS83TXRD  
TexWalk® WFS83TXRD10 10pk  
Temp-Step™ WFS83ARD  
Temp-Step™ WFS83ARD10 10pk  
Walk-On™ WFS83RD  
Walk-On™ WFS83RD10 10pk



TexWalk® WFS84TXRD  
TexWalk® WFS84TXRD10 10pk  
Temp-Step™ WFS84ARD  
Temp-Step™ WFS84ARD10 10pk  
Walk-On™ WFS84RD  
Walk-On™ WFS84RD10 10pk



TexWalk® WFS87TXYE  
TexWalk® WFS87TXYE10 10pk  
Temp-Step™ WFS87AYE  
Temp-Step™ WFS87AYE10 10pk  
Walk-On™ WFS87YE  
Walk-On™ WFS87YE10 10pk



TexWalk® WFS87TXYESP  
TexWalk® WFS87TXYESP10 10pk  
Temp-Step™ WFS87AYESP  
Temp-Step™ WFS87AYESP10 10pk  
Walk-On™ WFS87YESP  
Walk-On™ WFS87YESP10 10pk



TexWalk® WFS83TXYL  
TexWalk® WFS83TXYL10 10pk  
Temp-Step™ WFS83AYL  
Temp-Step™ WFS83AYL10 10pk  
Walk-On™ WFS83YL  
Walk-On™ WFS83YL10 10pk



TexWalk® WFS84TXYL  
TexWalk® WFS84TXYL10 10pk  
Temp-Step™ WFS84AYL  
Temp-Step™ WFS84AYL10 10pk  
Walk-On™ WFS84YL  
Walk-On™ WFS84YL10 10pk



TexWalk® WFS87TXGR  
TexWalk® WFS87TXGR10 10pk  
Temp-Step™ WFS87AGR  
Temp-Step™ WFS87AGR10 10pk  
Walk-On™ WFS87GR  
Walk-On™ WFS87GR10 10pk



TexWalk® WFS87TXGRSP  
TexWalk® WFS87TXGRSP10 10pk  
Temp-Step™ WFS87AGRSP  
Temp-Step™ WFS87AGRSP10 10pk  
Walk-On™ WFS87GRSP  
Walk-On™ WFS87GRSP10 10pk



TexWalk® WFS86TXRD  
TexWalk® WFS86TXRD10 10pk  
Temp-Step™ WFS86ARD  
Temp-Step™ WFS86ARD10 10pk  
Walk-On™ WFS86RD  
Walk-On™ WFS86RD10 10pk



TexWalk® WFS86TXGR  
TexWalk® WFS86TXGR10 10pk  
Temp-Step™ WFS86AGR  
Temp-Step™ WFS86AGR10 10pk  
Walk-On™ WFS86GR  
Walk-On™ WFS86GR10 10pk



TexWalk® WFS88TX  
TexWalk® WFS88TX10 10pk  
Temp-Step™ WFS88A  
Temp-Step™ WFS88A10 10pk  
Walk-On™ WFS88  
Walk-On™ WFS8810 10pk



TexWalk® WFS88TXSP  
TexWalk® WFS88TXSP10 10pk  
Temp-Step™ WFS88ASP  
Temp-Step™ WFS88ASP10 10pk  
Walk-On™ WFS88SP  
Walk-On™ WFS88SP10 10pk



TexWalk® WFS86TXYE  
TexWalk® WFS86TXYE10 10pk  
Temp-Step™ WFS86AYE  
Temp-Step™ WFS86AYE10 10pk  
Walk-On™ WFS86YE  
Walk-On™ WFS86YE10 10pk



**CUSTOM LEGENDS AVAILABLE**  
**Call us today to get started!**



# Social Distancing Floor Marking Strips

Create a clear directive for any situation requiring social distancing. Let staff and students know where to wait to keep an appropriate distance, decreasing confusion and the transmission of airborne illness.

20"

← 6 ft → **THANK YOU FOR PRACTICING SOCIAL DISTANCING** ← 6 ft →

2.25"

- |            |             |      |
|------------|-------------|------|
| TexWalk®   | WFS78TXRD   |      |
| TexWalk®   | WFS78TXRD10 | 10pk |
| Temp-Step™ | WFS78ARD    |      |
| Temp-Step™ | WFS78ARD10  | 10pk |
| Walk-On™   | WFS78RD     |      |
| Walk-On™   | WFS78RD10   | 10pk |

← 6 ft → **THANK YOU FOR PRACTICING SOCIAL DISTANCING** ← 6 ft →

- |            |             |      |
|------------|-------------|------|
| TexWalk®   | WFS78TXYL   |      |
| TexWalk®   | WFS78TXYL10 | 10pk |
| Temp-Step™ | WFS78AYL    |      |
| Temp-Step™ | WFS78AYL10  | 10pk |
| Walk-On™   | WFS78YL     |      |
| Walk-On™   | WFS78YL10   | 10pk |

↓ **PLEASE WAIT HERE** ↓  
*Practice Social Distancing*

- |            |           |      |
|------------|-----------|------|
| TexWalk®   | WFS81TX   |      |
| TexWalk®   | WFS81TX10 | 10pk |
| Temp-Step™ | WFS81A    |      |
| Temp-Step™ | WFS81A10  | 10pk |
| Walk-On™   | WFS81     |      |
| Walk-On™   | WFS8110   | 10pk |

↑ **ONE WAY** ↑ **ONE WAY** ↑

- |            |             |      |
|------------|-------------|------|
| TexWalk®   | WFS90TXYE   |      |
| TexWalk®   | WFS90TXYE10 | 10pk |
| Temp-Step™ | WFS90AYE    |      |
| Temp-Step™ | WFS90AYE10  | 10pk |
| Walk-On™   | WFS90YE     |      |
| Walk-On™   | WFS90YE10   | 10pk |

↑ **ONE WAY** ↑ **ONE WAY** ↑

- |            |             |      |
|------------|-------------|------|
| TexWalk®   | WFS90TXGR   |      |
| TexWalk®   | WFS90TXGR10 | 10pk |
| Temp-Step™ | WFS90AGR    |      |
| Temp-Step™ | WFS90AGR10  | 10pk |
| Walk-On™   | WFS90GR     |      |
| Walk-On™   | WFS90GR10   | 10pk |

**DO NOT ENTER** X **DO NOT ENTER**

- |            |           |      |
|------------|-----------|------|
| TexWalk®   | WFS91TX   |      |
| TexWalk®   | WFS91TX10 | 10pk |
| Temp-Step™ | WFS91A    |      |
| Temp-Step™ | WFS91A10  | 10pk |
| Walk-On™   | WFS91     |      |
| Walk-On™   | WFS9110   | 10pk |



TexWalk®	7.63 x 19.63	WFS74TX
Temp-Step™	8 x 20	WFS74A
Walk-On™	8 x 20	WFS74



TexWalk®	7.63 x 19.63	WFS75TX
Temp-Step™	8 x 20	WFS75A
Walk-On™	8 x 20	WFS75



TexWalk®	7.63 x 19.63	WFS76TX
Temp-Step™	8 x 20	WFS76A
Walk-On™	8 x 20	WFS76



TexWalk®	7.63 x 19.63	WFS89TXBL
Temp-Step™	8 x 20	WFS89ABL
Walk-On™	8 x 20	WFS89BL



TexWalk®	7.63 x 19.63	WFS89TXGR
Temp-Step™	8 x 20	WFS89AGR
Walk-On™	8 x 20	WFS89GR



TexWalk®	7.63 x 19.63	WFS89TXYE
Temp-Step™	8 x 20	WFS89AYE
Walk-On™	8 x 20	WFS89YE



TexWalk®	7.63 x 19.63	WFS89TXRD
Temp-Step™	8 x 20	WFS89ARD
Walk-On™	8 x 20	WFS89RD



## Projector & Illness Prevention Lenses

Communicate important safety messages in a highly visible and impactful way.

- Perfect for high traffic areas
- Zero wear and tear vs. traditional floor signs
- Portable & easy to install
- Fan cooled technology prevents overheating
- Projects up to 262 ft
- Remote control and mounting kit included



**Custom Lenses Available\***

\*21 day lead time from time of order



**6 Feet**  
Projector & Lens VSP6  
Lens Only VSPL6



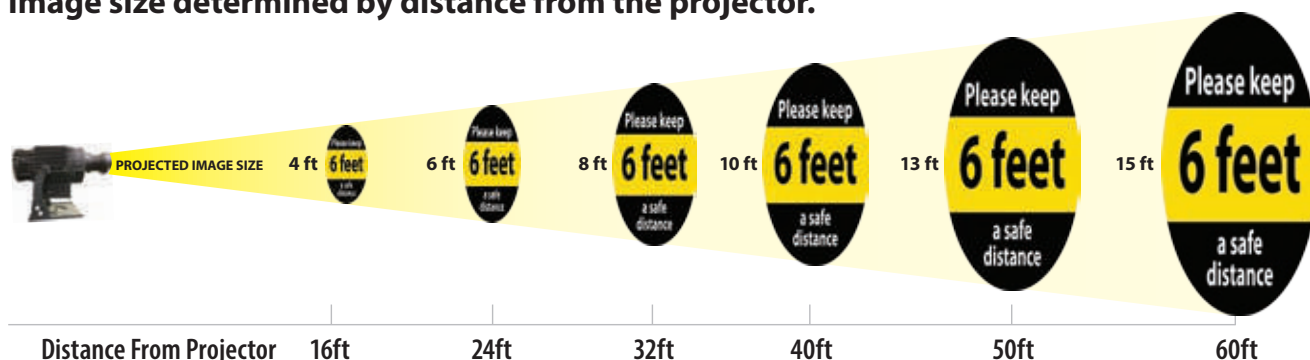
**Social Distancing**  
Projector & Lens VSP7  
Lens Only VSPL7



**No Handshakes**  
Projector & Lens VSP8  
Lens Only VSPL8

## Distance Chart

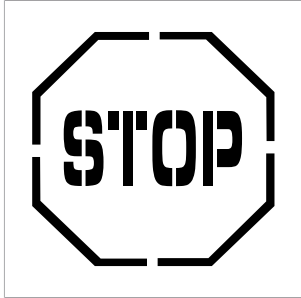
Image size determined by distance from the projector.



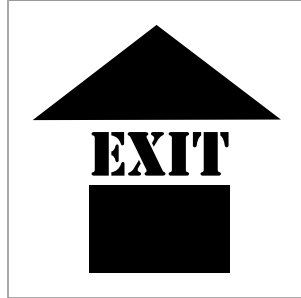
## Stencils

Use reusable stencils to mark sidewalks, parking lots or other areas to quickly and easily display lasting messages.

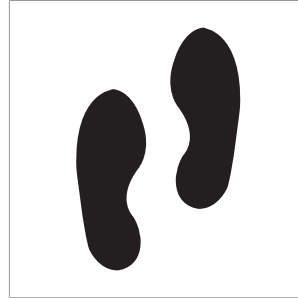
SIZE
24" x 24"



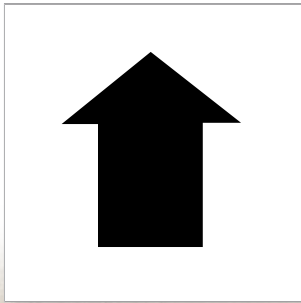
PMS203



PMS209



PMS229



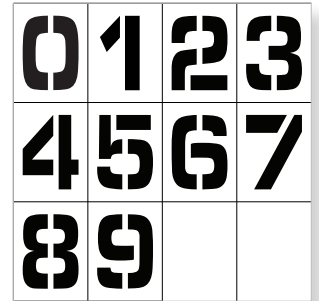
PMS221



PMS55



PMS56



PMN12  
Stencil Number Set 0-9

ITEM NO	CHARACTER HEIGHT
PMN12	12"
PMN36	36"












## Distancing & Crowd Control

Waterproof and wear resistant 6 mil vinyl tape applies easily to clean, smooth, dry surfaces with a synthetic rubber resin adhesive and has a temp resistance of -20°F to 175°F.



### Striped Safety Tapes

COLOR	SIZE	PART NO.
	2" x 54'	T20218
	2" x 108'	T20236
	3" x 54'	T22018
	3" x 108'	T22036
	2" x 54'	T20718
	2" x 108'	T20736
	2" x 54'	T20118
	2" x 108'	T20136
	3" x 54'	T22118
	3" x 108'	T22136
	2" x 54'	T20318
	2" x 108'	T20336
	3" x 54'	T22318
	3" x 108'	T22336
	2" x 54'	T20418
	2" x 108'	T20436
	3" x 54'	T22418
	3" x 108'	T22436
	2" x 54'	T20918
	2" x 108'	T20936
	3" x 54'	T22918
	3" x 108'	T22936
	2" x 54'	T20818
	2" x 108'	T20836
	3" x 54'	T22818
	3" x 108'	T22836



### Solid Color Safety Tapes

COLOR	SIZE	PART NO.
BLACK	2" x 108'	T214
	3" x 108'	T244
WHITE	2" x 108'	T206
	3" x 108'	T236
ORANGE	2" x 108'	T209
	3" x 108'	T239
BLUE	2" x 108'	T210
	3" x 108'	T240
GREEN	2" x 108'	T208
	3" x 108'	T238
YELLOW	2" x 108'	T205
	3" x 108'	T235
RED	2" x 108'	T204
	3" x 108'	T234
BROWN	2" x 108'	T212
	3" x 108'	T242

## Marking Tape Floor Applicator

Mark specific areas to promote safety.

- Stable, stand-alone design
- Holds up to a 4"x 180' roll of floor marking or a 4"x 150' roll of pavement marking tape
- Large wheel base for smooth tape placement
- Heavy duty construction
- Minimal assembly required

PART NO.
FTA01



**Don't see what you need?**

Our Customer Support Team is here to help you every step of the way.

**Reach out today to get started!**



## Distancing & Crowd Control

Built to withstand frequent traffic, 30 & 50 mil thick floor marking tapes provide a durable solution that goes down easy and cleans up just as well.

- Designed for long-term floor marking
- Smooth, easy to clean, slip resistant
- Leaves no residue when removed
- Faster to install than paint, with zero downtime

### Heavy-Duty Floor Tape

- 50 mil thickness
- Material: PVC



### Durable Floor Tape

- 30 mil thickness
- Material: Vinyl



COLOR	PART NO.	SIZE
YELLOW	DT2Y	2" X 100'
	DT4Y	4" X 100'
RED	DT2R	2" X 100'
	DT4R	4" X 100'
BLUE	DT2B	2" X 100'
	DT4B	4" X 100'
GREEN	DT2G	2" X 100'
	DT4G	4" X 100'

COLOR	PART NO.	SIZE
YELLOW	HDT2Y	2" X 100'
	HDT3Y	3" X 100'
	HDT4Y	4" X 100'
RED	HDT2R	2" X 100'
	HDT3R	3" X 100'
	HDT4R	4" X 100'
BLUE	HDT2B	2" X 100'
	HDT3B	3" X 100'
	HDT4B	4" X 100'
GREEN	HDT2G	2" X 100'
	HDT3G	3" X 100'
	HDT4G	4" X 100'
BLACK	HDT2BK	2" X 100'
	HDT3BK	3" X 100'
	HDT4BK	4" X 100'
ORANGE	HDT2OR	2" X 100'
	HDT3OR	3" X 100'
	HDT4OR	4" X 100'
YELLOW BLACK STRIPE	HDT2BKYL	2" X 100'
	HDT3BKYL	3" X 100'
	HDT4BKYL	4" X 100'

### Floor Markings

Ideal for directing foot traffic and creating pathways.

- Includes 25 per pack
- 50 mil thick for long-term application & use
- Designed to withstand frequent traffic
- Rubber based pressure sensitive adhesive
- Service temp range -10°F to 150°F
- Application temp range 40°F to 150°F

### T-Markers

PART NO.	COLOR
LN125	Red
LN126	Yellow
LN127	Blue
LN128	Green
LN129	Black w/ White Stripe
LN130	Black w/ Yellow Stripe



6" x 6" x 2"

### Corner Marker Angles

PART NO.	COLOR
LN119	Red
LN120	Yellow
LN121	Blue
LN122	Green
LN123	Black w/ White Stripe
LN124	Black w/ Yellow Stripe



6" x 6" x 2"

### Marking Dots

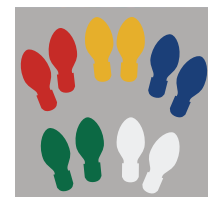
PART NO.	COLOR
LN131	Red
LN132	Yellow
LN133	Blue
LN134	Green
LN135	White



3.5" Dia.

### Footprints

PART NO.	COLOR
LN114	Red
LN115	Yellow
LN116	Blue
LN117	Green
LN118	White



3.5" x 9.5"

## A-Frame Signs & Stands

### Signage for Outdoor Use

NMC's Deluxe A-Frame Sidewalk & Parking lot signs are ideal for directing pedestrian and motorized traffic.

- Stand Measures 45" x 25"
- Sign Measures 36" x 24"
- Double-sided (stand can hold two signs, one on each side)
- High-density impact plastic
- Sign made of corrugated plastic (sign is removable)
- No tools, tape or screws needed –simply fold-out and go
- Custom messages available



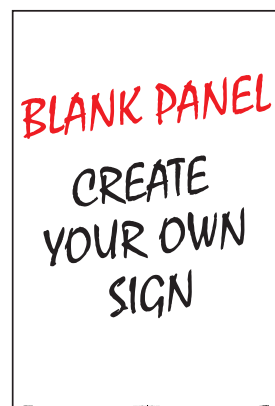
SFS102C Shown - Dry Erase Insert



SFS100



SFS101



SFS102C



Sign & Stand: SFS114C-KIT  
Sign Only: SFS114C



Sign & Stand: SFS115C-KIT  
Sign Only: SFS115C



**Don't see what  
you need?**

Our Customer Support  
Team is here to help you  
every step of the way.

**Reach out today to  
get started!**

## Double Sided, Reversible Floor Signs



FS43



FS44



FS45



FS46



FS47



FS48



FS49

### MATERIAL

19 x 12 Corrugated Polyethylene

FS46 Shown





## Cones & Cone Top Signs



CS29



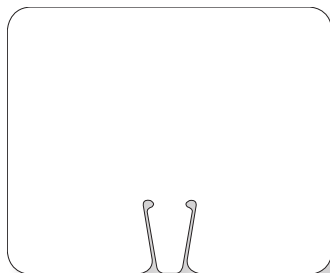
CS30



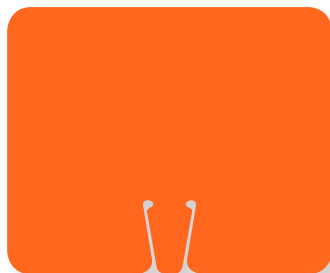
CS31



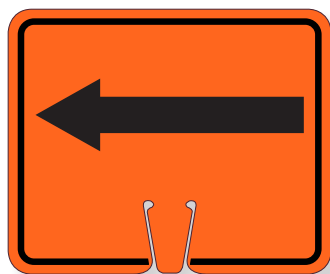
CS15



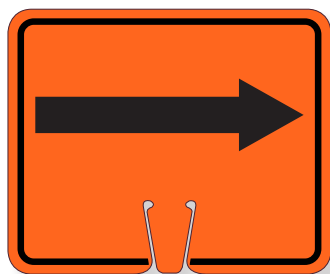
CS2



CS1



CS4



CS5



CS8



CS9

10.375 X 12.625

Material

Rigid Plastic



Cone & Cone Top Sign sold separately



Cone Top Signs fit TPC2 only



TPC2



TFS304

ITEM NO.	SIZE
TPC2	Orange, 18 x 10.5. 1/case

ITEM NO.	DESCRIPTION
TFS304	Tri-View, 40 x 15, 3/case

## Work Station Guards

Open concept offices and classrooms present unique challenges as employers and employees are sensitive to controlling the spread of communicable diseases. Work Station Guards provide a stop-gap solution. Place guards to help keep workers healthy and prevent the spread of viruses.

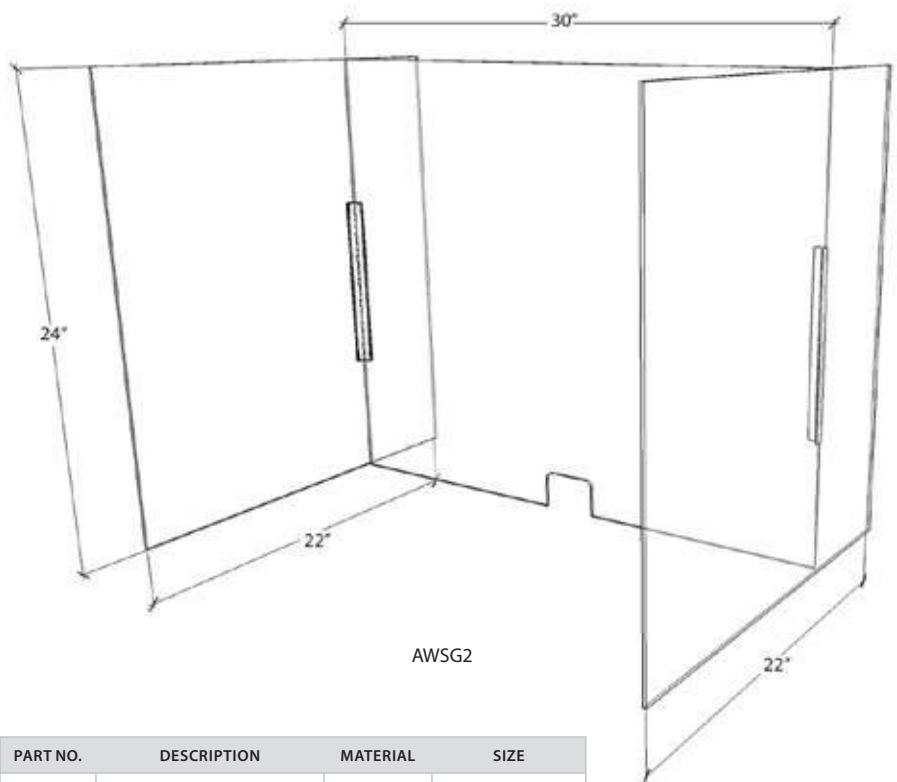
- Made of acrylic
- Easy to clean
- Portable/storable
- Sturdy 3-sided hinge design
- Fully customizable



### Don't see what you need?

Our Customer Support Team is here to help you every step of the way.

**Reach out today to get started!**



AWSG2



PART NO.	DESCRIPTION	MATERIAL	SIZE
AWSG1	Foldable Work Station Shield	Acrylic .177	24"h X 30"w , 14"d
AWSG2	Foldable Work Station Shield	Acrylic .177	24"h X 30"w , 22"d

## Acrylic PPE Dispensers

- Widest selection of standard dispensers
- Convenient and economical
- Hassle-free ordering with FAST shipping
- Superior acrylic quality
- American made
- No Minimums
- Most Styles include free identification labels



### Glove Dispenser

Comes in 3 sizes to accommodate any range of needs.

- 15 x 10.75 holds 3 boxes of gloves
- 10 x 10.75 holds 2 boxes of gloves
- 5 x 10.75 holds 1 box of gloves
- Table or wall mount

ITEM NO	SIZE
AGBT	15 x 10.75
AGBD	10 x 10.75
AGBS	5 x 10.75



AGBT

### Safety Glasses Dispenser

- Features bottom door to keep glasses in place
- Dimensions: 18 x 8 x 4
- Holds up to approx. 20 pairs
- Table or wall mount



ASG-D

### Miscellaneous PPE Dispenser

Store a wide range of PPE supplies such as bouffants, booties, gloves, earplugs, etc.

- Size: 10 x 10 x 10
- 4" round opening in front for easy access
- Table or wall mount



ADB

### Mini Multi-Use Dispenser with Cover

Easy to store PPE dispenser protects contents with a full cover.

- Size: 12 x 6.5
- Lid protects PPE from airborne contaminants, dust & debris
- Table or wall mount



ADM1



## Customize your dispensers

Get your message noticed with custom designed acrylic and label options!



# Biohazard

Clearly mark biohazard areas with proper identification products including floor signs, labels, signs, and barricade tape.

## Double-Sided Floor Signs

- Made of lightweight 4 mm corrugated polyethylene
- Printed on four sides, one message on the outside and another message on the inside
- Water-proof
- Folds easily for convenient storage



FS37



## Signs & Labels

Includes the universally recognized biohazard symbol and meet OSHA's marking requirement in standard 1910.1030 for bloodborne pathogens.



PSP 1 x 3, 500/Roll WOL6



PSP 1 x 3, 500/Roll WOL7



PSV 7 x 7 S92P  
RB 7 x 7 S92R



PSV 7 x 7 S93P  
RB 7 x 7 S93R



PSV 4 x 4, 5/Pk S52AP  
PSV 7 x 7 S52P  
RB 7 x 7 S52R  
PSP 3 x 3, 500/Roll S52RL



PSV 10 x 18 SPSA52P  
RB 10 x 18 SPSA52R

MATERIALS
Pressure Sensitive Vinyl (PSV)
Pressure Sensitive Paper (PSP)
Rigid Plastic (RB)

## Tags

The use of tags is permitted for compliance, as outlined in OSHA standard 1910.145. Biohazard tags measuring 6" x 3" are versatile when labels may not be the ideal solution.



RPT54

## Barricade Tape

Biohazard barricade tape measures 3" by 1000-ft long with a continuous repeat of the text shown below.



PT40

## Starter Kits

### Key Products kitted to address your immediate re-opening needs.

Kits provide the essentials you need to begin properly identifying your campus as the doors open to students, staff, contractors, vendors and others. Choose from three kits geared towards small, medium, or large facilities.

Each kit contains applicable products in a variety of quantities to communicate important health and safety measures from lobby to loading dock.

- Be ready to re-open your campus
- Provide clear, professional messaging
- Product assortments based on best sellers
- Kits contain handwashing signs, posters, floor tapes and social distancing floor signs



### Small Kit

ITEM NO.

BWK01

MANUFACTURED IN  
★ AMERICA ★



- (1) 5/Pack of 6" dia. clear PSV, NO HANDSHAKE labels
- (1) 10 x 14 Rigid Plastic, NOTICE PRACTICE SOCIAL DISTANCING sign
- (1) 14 x 10 PSV, NOTICE FACE MASK REQUIRED sign
- (2) 5/Packs of 3 x 5 PSV, NOTICE WASH YOUR HANDS BEFORE RETURNING TO WORK labels
- (4) 7 x 10 Rigid Plastic, WASH YOUR HANDS signs
- (2) 18 x 24 Heavy-Duty Poster Paper, WASH YOUR HANDS posters
- (1) 24 x 18 Heavy-Duty Poster Paper, STOP THE SPREAD OF GERMS poster
- (2) Rolls of 2 x 108' Yellow 6-mil Floor Tape
- (2) 12 x 12 SOCIAL DISTANCING floor signs in Walk-On™ material
- (2) 12 x 12 PLEASE KEEP A SAFE DISTANCE floor signs in Walk-On™ material

## Medium Kit

ITEM NO.
BWK02



- (2) 5/Packs of 6" dia. Clear PSV, NO HANDSHAKE labels
- (2) 10 x 14 Rigid Plastic, NOTICE PRACTICE SOCIAL DISTANCING signs
- (2) 5/Packs of 3 x 5 PSV, NOTICE WASH YOUR HANDS BEFORE RETURNING TO WORK labels
- (6) 7 x 10 Rigid Plastic, WASH YOUR HANDS signs
- (4) 14 x 10, PSV, NOTICE FACE MASK REQUIRED signs
- (1) 5/Pack of 18 x 12, Paper, USE OF CLOTH FACE COVERINGS posters
- (1) 5/Pack of 18 x 12, Paper, GUIDELINES FOR WEARING A MASK posters
- (4) 12 x 18 Unrippable Vinyl, WASH YOUR HANDS posters
- (2) 24 x 18 Heavy-Duty Poster Paper, STOP THE SPREAD OF GERMS poster
- (3) Rolls of 2 x 108' Yellow 6-mil Floor Tape
- (2) 12 x 12 SOCIAL DISTANCING floor signs in Walk-On™ material
- (2) 10/Packs of 2.25 x 20 THANK YOUR FOR PRACTICING SOCIAL DISTANCING floor strips in of Temp-Step™ material
- (2) 12 x 12 PLEASE KEEP A SAFE DISTANCE floor signs in Walk-On™ material
- (2) 6 x 9 Plastic HAND SANITIZING STATION 3D wall signs

## Large Kit

ITEM NO.
BWK03



- (2) 5/Packs of 6" dia. clear PSV, NO HANDSHAKE labels
- (4) 10 x 14 Rigid Plastic, NOTICE PRACTICE SOCIAL DISTANCING signs
- (4) 5/Packs of 3 x 5 Removable PSV, NOTICE WASH YOUR HANDS BEFORE RETURNING TO WORK labels
- (6) 7 x 10 Rigid Plastic, WASH YOUR HANDS signs
- (2) 14 x 10 Rigid Plastic, TEMPERATURE CHECK STATION signs
- (6) 14 x 10, PSV, NOTICE FACE MASK REQUIRED signs
- (4) 5/Packs of 18 x 12 Paper, USE OF CLOTH FACE COVERINGS posters
- (2) 5/Packs of 8 x 12 Paper, GUIDELINES FOR WEARING A MASK posters
- (2) 18 x 12 Unrippable Vinyl, WELCOME NO HAND SHAKES posters
- (2) 18 x 24 Heavy Duty Poster Paper, WASH YOUR HANDS posters
- (4) 18 x 24 Heavy Duty Poster Paper, STOP THE SPREAD OF GERMS posters
- (4) Rolls of 2 x 108' Yellow 6-mil Floor Tape
- (4) 12 x 12 SOCIAL DISTANCING floor signs in Walk-On™ material
- (3) 10/Packs of 2.25 x 20 THANK YOUR FOR PRACTICING SOCIAL DISTANCING floor strips in Temp-Step™ material
- (4) 12 x 12 PLEASE KEEP A SAFE DISTANCE floor signs in Walk-On™ material
- (4) 6 x 9 Plastic HAND SANITIZING STATION 3D wall signs



# COVID-19 Tyvek® SCREENING WRISTBANDS



## Make Safety Visible with Tyvek® Screening Wristbands



QTY
1000/Box

### DESCRIPTION:

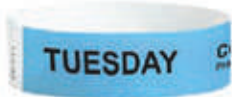
NMC's Tyvek® 3/4" x 10" COVID-19 Screening Wristbands were created with employee health and well-being in mind. Wristbands are pre-printed with messaging to showcase who should/should not be on a campus. NMC offers a variety of colors and designs including prescreen, visitor, temperature, and days of the week. Custom messages are available.

### FEATURES:

- Made with durable, 100% DuPont™ Tyvek®
- Secure and tamper-evident closure
- Sequentially numbered for accountability
- Waterproof and tear-resistant
- Ideal for short-term use: 1-2 days
- Custom imprinting, barcoding and custom numbering available
- Made in the U.S.A



WB01BL



WB01SB



WB01YL



WB01AQ



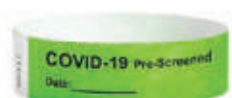
WB01RD



WB01GR



WB01OR



WB02GR

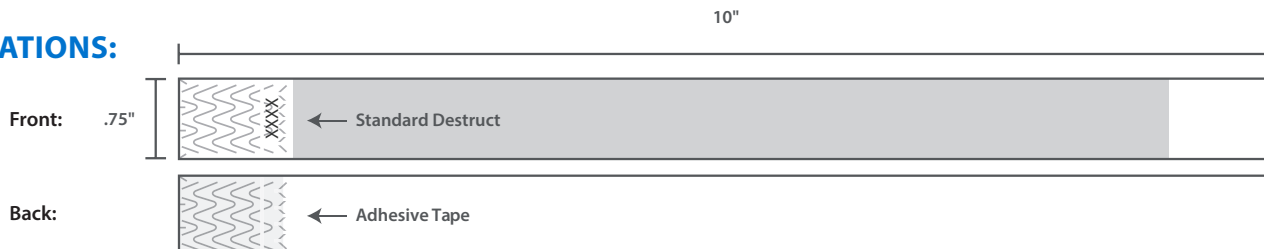


WB03RD



WB04PK

### 3/4" SPECIFICATIONS:



Tyvek® is a registered trademark of DuPont®.



# THE LAST SIGN YOU WILL EVER BUY™

Sign Muscle® is Polymer Coating that preserves the life of your NMC signs and labels.



Resists Fading!



Make Clean Up Easy!



Easily Restored Like New

**Many items in this catalog  
include Sign Muscle® for free!**

These sign and label material references  
include Sign Muscle®.

- PSV** Pressure Sensitive Vinyl
- PBR** Removable Adhesive Backed Vinyl
- RB** Rigid Plastic
- AL** Aluminum

Additional products such as TexWalk® and  
Large Format Signs also include Sign Muscle®.

***Protection Applied Free, Guaranteed for Life!***

