



PANDEMIC SOLUTIONS

NEW | BACK TO WORK
SUMMER 2020

Posters • Signs • Labels • Tapes • Floor Signs



Go Beyond Standard... CUSTOMIZE IT!

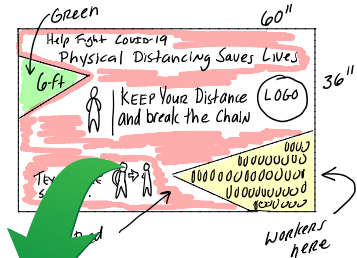
Whatever your regulations or standards, design products that meet **YOUR** needs, free of charge.

Choose from a range of quality materials sourced in the U.S.A., protected with our one of a kind Sign Muscle® coating to make it last.

- No charge for artwork
- 2 Day turnaround time
- Made in the U.S.A.
- No minimums
- Free Sign Muscle® protective coating



1 FROM IDEA



2 TO PROOF



3 TO REALITY



Table of Contents:

	Illness Prevention Signs	4-7
Key Products	Illness Prevention Posters	8-10
Key Products	Job Site/Facility Signs & Banners.....	11-13
	Labels	14-16
Key Products	Social Distancing Floor Markings	17-22
	Floor Marking Tapes & Shapes	23-24
	Temporary Directional Signage.....	25-27
	Work Station Virus Protection.....	28
	Acrylic PPE Dispensers	29
	Biohazard.....	30
Key Products	Back to Work Kits.....	31-32

CDC Handwashing Guidelines

Follow these five steps every time:

WET

Wet your hands with clean, running water (warm or cold), and apply soap.

LATHER

Lather your hands by rubbing them together with the soap. Lather the backs of your hands, between your fingers, and under your nails.

SCRUB

Scrub your hands for at least 20 seconds. Need a timer? Hum the "Happy Birthday" song twice.

RINSE

Rinse your hands well under clean, running water.

DRY

Dry your hands using a clean towel or air dry them.

*Source CDC.gov

Signs

Post signs in key locations around your facility identifying the importance of, and best tips for hand washing, as well as other safeguards for preventing illness in the workplace.

Material Reference Chart:

PSV	Pressure Sensitive Vinyl
PBR	Removable Adhesive Backed Vinyl
RB	Rigid Plastic
AL	Aluminum

Social Distancing



PBR 14 x 10 M611PBR
RB 14 x 10 M611RB



PBR 14 x 10 M0146PBR
RB 14 x 10 M0146RB



PBR 14 x 10 M0148PBR
RB 14 x 10 M0148RB



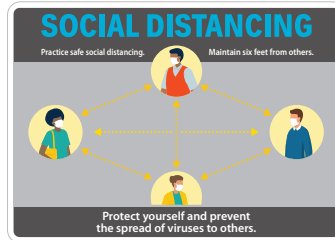
PBR 14 x 10 M0150PBR
RB 14 x 10 M0150RB



AL 10 x 14 NGA38AB
PSV 10 x 14 NGA38PB
RB 10 x 14 NGA38RB



AL 10 x 14 M617AB
PSV 10 x 14 M617PB
RB 10 x 14 M617RB



AL 10 x 14 M618AB
PSV 10 x 14 M618PB
RB 10 x 14 M618RB



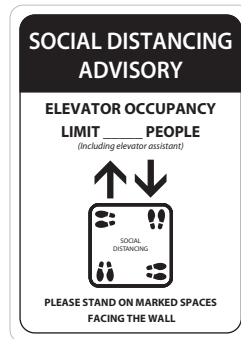
AL 10 x 14 M619AB
PSV 10 x 14 M619PB
RB 10 x 14 M619RB



AL 10 x 14 M620AB
PSV 10 x 14 M620PB
RB 10 x 14 M620RB



PSV 14 x 10 M615PB
RB 14 x 10 M615RB



PSV 14 x 10 M616PB
RB 14 x 10 M616RB

MATERIALS	1-5	6+
Pressure Sensitive Vinyl (PSV)	\$9.33	\$8.56
Pressure Sensitive Removable Vinyl (PBR)	\$8.40	\$7.70
Rigid Plastic (RB)	\$12.64	\$11.60
Aluminum (.040)	\$23.71	\$21.78



Hand Washing



PSV 10 x 7 WH1P
PSV 14 x 10 WH1PB
PBR 14 x 10 WH1PBR
PBR 10 x 7 WH1PR
RB 14 x 10 WH1RB



PSV 10 x 7 WH2P
PSV 14 x 10 WH2PB
PBR 14 x 10 WH2PBR
PBR 10 x 7 WH2PR
RB 14 x 10 WH2RB



PSV 10 x 7 WH3P
PSV 14 x 10 WH3PB
PBR 14 x 10 WH3PBR
PBR 10 x 7 WH3PR
RB 14 x 10 WH3RB



PSV 10 x 7 WH4P
PSV 14 x 10 WH4PB
PBR 14 x 10 WH4PBR
PBR 10 x 7 WH4PR
RB 14 x 10 WH4RB



PSV 14 x 10 N520PB
RB 14 x 10 N520RB
PBR 14 x 10 N520PBR



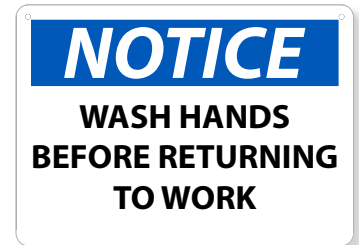
PSV 7 x 10 WH6P
PSV 10 x 14 WH6PB
PBR 10 x 14 WH6PBR
PBR 7 x 10 WH6PR
RB 10 x 14 WH6RB



RB 10 x 14 N247RB
PSV 10 x 14 N247PB
AL 10 x 14 N247AB

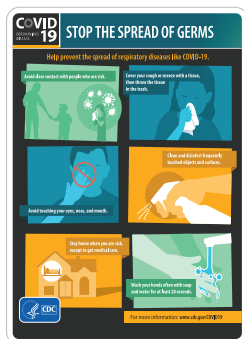


PSV 7 x 10 WH5P
PSV 10 x 14 WH5PB
PBR 10 x 14 WH5PBR
PBR 7 x 10 WH5PR
RB 10 x 14 WH5RB



AL 10 x 14 N43AB
RB 10 x 14 N43RB
PSV 10 x 14 N43PB

Visitor Precautions



PBR 14 x 10 M0139PBR
RB 14 x 10 M0139RB



PBR 14 x 10 M0140PBR
RB 14 x 10 M0140RB



PBR 14 x 10 M0141PBR
RB 14 x 10 M0141RB



PBR 14 x 10 M0142PBR
RB 14 x 10 M0142RB

Material Reference Chart:

PSV	Pressure Sensitive Vinyl
PBR	Removable Adhesive Backed Vinyl
RB	Rigid Plastic
AL	Aluminum

	7 x 10		10 x 14	
MATERIALS	1-5	6+	1-5	6+
Pressure Sensitive Vinyl (PSV)	\$7.07	\$6.49	\$9.33	\$8.56
Pressure Sensitive Removable Vinyl (PBR)	\$6.36	\$5.84	\$8.40	\$7.70
Rigid Plastic (RB)	-	-	\$12.64	\$11.60
Aluminum (.040)	-	-	\$23.71	\$21.78

Entrance Guidelines



AL 14 x 10 NGA39AB
PSV 14 x 10 NGA39PB
RB 14 x 10 NGA39RB



AL 14 x 10 ESN523AB
PSV 14 x 10 ESN523PB
RB 14 x 10 ESN523RB



PBR 14 x 10 ESN520PBR
RB 14 x 10 ESN520RB
AL 14 x 10 ESN520AB



PBR 14 x 10 M0155PBR
RB 14 x 10 M0155RB



PBR 14 x 10 M0155PBRSP
RB 14 x 10 M0155RBSP



AL 14 x 10 M614AB
PSV 14 x 10 M614PB
RB 14 x 10 M614RB



AL 10 x 14 N523AB
PSV 10 x 14 N523PB
RB 10 x 14 N523RB

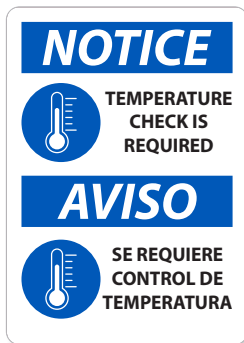


AL 10 x 14 SPNGA37AB
PBR 10 x 14 SPNGA37PBR
RB 10 x 14 SPNGA37RB



AL 10 x 14 NGA37AB
PBR 10 x 14 NGA37PBR
RB 10 x 14 NGA37RB

Temperature Check



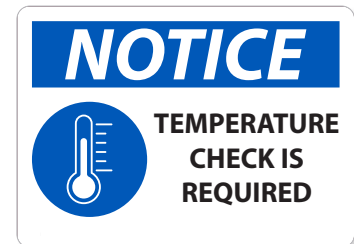
AL 14 x 10 ESN522AB
PSV 14 x 10 ESN522PB
RB 14 x 10 ESN522RB



AL 14 x 10 M612AB
PSV 14 x 10 M612PB
RB 14 x 10 M612RB



AL 10 x 14 M613AB
PSV 10 x 14 M613PB
RB 10 x 14 M613RB



AL 10 x 14 N522AB
PSV 10 x 14 N522PB
RB 10 x 14 N522RB

Material Reference Chart:

PSV	Pressure Sensitive Vinyl
PBR	Removable Adhesive Backed Vinyl
RB	Rigid Plastic
AL	Aluminum

MATERIALS	1-5	6+
Pressure Sensitive Vinyl (PSV)	\$9.33	\$8.56
Pressure Sensitive Removable Vinyl (PBR)	\$8.40	\$7.70
Rigid Plastic (RB)	\$12.64	\$11.60
Aluminum (.040)	\$23.71	\$21.78

Facility Protocol



PSV 7 x 10 N519P
PSV 10 x 14 N519PB
PBR 10 x 14 N519PBR
PBR 7 x 10 N519PR



PBR 10 x 14 N521PBR
RB 10 x 14 N521RB



PSV 7 x 10 N518P
PSV 10 x 14 N518PB
PBR 10 x 14 N518PBR
PBR 7 x 10 N518PR



PB 14 x 10 ESN518PB
PBR 14 x 10 ESN518PBR
AL 14 x 10 ESN518AB
RB 14 x 10 ESN518RB



PB 14 x 10 ESN519PB
PBR 14 x 10 ESN519PBR
AL 14 x 10 ESN519AB
RB 14 x 10 ESN519RB

MATERIALS	7 x 10		10 x 14	
	1-5	6+	1-5	6+
Pressure Sensitive Vinyl (PSV)	\$7.07	\$6.49	\$9.33	\$8.56
Pressure Sensitive Removable Vinyl (PBR)	\$6.36	\$5.84	\$8.40	\$7.70
Rigid Plastic (RB)	-	-	\$12.64	\$11.60
Aluminum (.040)	-	-	\$23.71	\$21.78

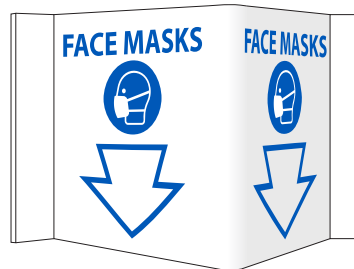
Material Reference Chart:

PSV Pressure Sensitive Vinyl
PBR Removable Adhesive Backed Vinyl
RB Rigid Plastic
AL Aluminum

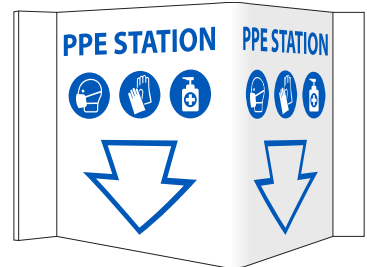
3D Wall Signs



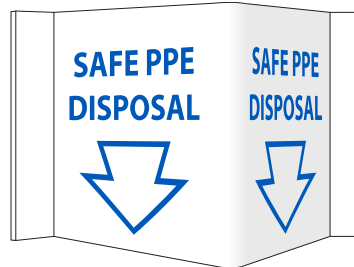
VS54



VS55



VS56



VS57

DESCRIPTION	1-5	6+
6 x 9 Rigid 3MM Vinyl	\$15.76	\$14.49



Posters

Provide daily reminders to help reduce workplace transmission of communicable diseases.

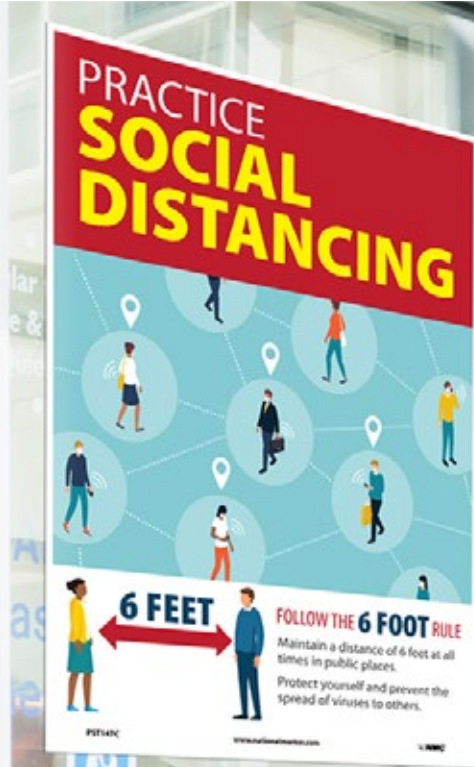
Social Distancing



HDP 24 x 18 PST148
UV 18 x 12 PST148C
PP 18 x 12 5/pk PST148PP



HDP 24 x 18 PST150
UV 18 x 12 PST150C
PP 12 x 18 5/pk PST150PP



HDP 24 x 18 PST147
UV 18 x 12 PST147C
PP 18 x 12 5/pk PST147PP

Illness Prevention



HDP 24 x 18 PST155
UV 18 x 12 PST155C
PP 18 x 12 5/pk PST155PP



HDP 24 x 18 PST155SP
UV 18 x 12 PST155CSP
PP 18 x 12 5/pk PST155PPSP

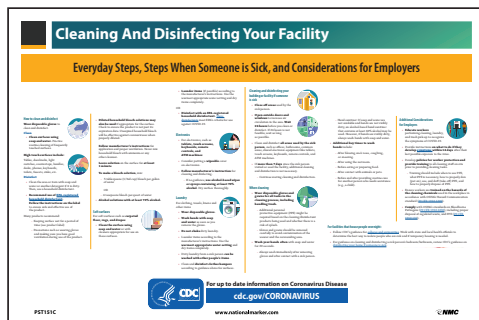
HOW LONG DO CORONAVIRUS* LIVE ON SURFACES?		
SURFACE	EXAMPLES	DAYS OR HOURS
Metal	Doorknobs, Jewelry	5 Days
Glass	Drinking glasses, Mirrors, Windows	UP TO 5 Days
Ceramics	Dishes, Pottery, Mugs	5 Days
Paper	Newspaper, Magazines	UP TO 5 Days
Wood	Furniture, Decking	4 Days
Plastics	Milk bottles, Bus seats, Elevator buttons	2-3 Days
Stainless Steel	Refrigerators, Pots/pans, Sinks, Water bottles	2-3 Days
Cardboard	Shipping Boxes	1 Day
Aluminum	Soda cans, Tinfoil, Water bottles	2-8 Hours
Copper	Pennies, Teakettles, Cookware	4 Hours
Food/Water	Doesn't seem to spread through food, and has not been found in water.	

WHAT YOU CAN DO: Disinfect all surfaces and objects in your home daily with a household cleaning spray or wipe. Wash hands for at least 60 seconds with soap and warm water, especially after visiting the supermarket or bringing packages. *Coronavirus is a type of virus that can cause the COVID-19 disease. Sources: CDC, FDA, MedRxiv Review: Brundage Nease, MD 03/04/2020

HDP 24 x 18 PST153
UV 18 x 12 PST153C
PP 18 x 12 5/pk PST153PP



HDP 24 x 18 PST154
UV 18 x 12 PST154C
PP 18 x 12 5/pk PST154PP



HDP 18 x 24 PST151
UV 12 x 18 PST151C
PP 12 x 18 5/pk PST151PP

Material Reference Chart:

HDP Heavy-Duty Poster Paper
UV Unrippable Vinyl
PP Poster Paper

MATERIAL	18 x 12	24 x 18
Heavy-Duty Poster Paper (HDP)	-	\$39.29
Unrippable Vinyl (UV)	\$22.36	-
Poster Paper 5/Pk, (PP)	\$11.60	-



Illness Prevention

COVID 19 STOP THE SPREAD OF GERMS

Help prevent the spread of respiratory diseases like COVID-19.

- Avoid close contact with people who are sick.
- Cover your cough or sneeze with a tissue, then throw the tissue in the trash.
- Clean and disinfect frequently touched objects and surfaces.
- Avoid touching your eyes, nose, and mouth.
- Stay home when you are sick, except to get medical care.
- Wash your hands often with soap and water for at least 20 seconds.

For more information: www.cdc.gov/covid19

HDP 24 x 18 PST139
UV 18 x 12 PST139C
PP 18 x 12 5/pk PST139PP

COVID 19 DETENGA LA PROPAGACIÓN DE LOS MICROBIOS

Ayuda a prevenir la propagación de virus respiratorios como el nuevo COVID-19.

- Evita el contacto cercano con las personas enfermas.
- Cúbrete la tose y la tos con un pañuelo desechable o el codo y estírate.
- Limpia y desinfecta frecuentemente las superficies que toques con frecuencia.
- Evita tocarte los ojos, la nariz y la boca.
- Quédese en casa si está enfermo, excepto para buscar atención médica.
- Lávate las manos frecuentemente con agua y jabón por al menos 20 segundos.

Para obtener más información: www.cdc.gov/covid19-es

HDP 24 x 18 PST140
UV 18 x 12 PST140C
PP 18 x 12 5/pk PST140PP

STOP Feeling Sick?

Stay home when you are sick!

If you feel unwell or have the following symptoms
DO NOT ENTER THE BUILDING

FEVER COUGH SHORTNESS OF BREATH

If you are in the building please leave and contact your health care provider.
Then follow-up with your supervisor.

For more information on Coronavirus Disease: cdc.gov/coronavirus

HDP 24 x 18 PST142
UV 18 x 12 PST142C
PP 18 x 12 5/pk PST142PP

PARE ¿Se siente enfermo?

¡Quédese en casa si está enfermo!

Si no se siente bien o tiene alguno de estos síntomas,
NO ENTRAR AL EDIFICIO

FIEBRE TOS DIFICULTAD PARA RESPIRAR

Si ya está en el edificio, salga y comuníquese con su proveedor de atención médica.
Luego, póngase en contacto con su supervisor.

Para obtener información actualizada sobre la enfermedad por coronavirus: cdc.gov/coronavirus

HDP 24 x 18 PST142SP
UV 18 x 12 PST142CSP
PP 18 x 12 5/pk PST142PPSP

Please read before entering.

IF YOU HAVE

Fever Cough Shortness of breath

Please call our office before coming inside.
Clinic Phone # _____

The clinic staff may ask you to wear a mask or use tissues to cover your cough.

Thank you for helping us keep our patients and staff safe.

For more information: www.cdc.gov/covid19

HDP 24 x 18 PST143
UV 18 x 12 PST143C
PP 18 x 12 5/pk PST143PP

Por favor lea antes de entrar.

SI USTED TIENE

Fiebre Tos Dificultad Para Respirar

Por favor llame a nuestra oficina antes de entrar.
de teléfono de la clínica _____

El personal de la clínica puede pedirle que use una máscara o use pañuelos para cubrirse la tos.

Gracias por ayudarnos a mantener seguros a nuestros pacientes y al personal.

Para más información: www.cdc.gov/covid19

HDP 24 x 18 PST143SP
UV 18 x 12 PST143CSP
PP 18 x 12 5/pk PST143PPSP

Use of Cloth Face Coverings to Help Slow the Spread of COVID-19

How to Wear Cloth Face Coverings

Cloth face coverings should:

- be made of material that is at least 2 layers thick
- be secured with ties or ear loops
- not have a face opening
- be able to be handled without touching the face

CDC also advises the use of single-use cloth face coverings to slow the spread of the virus and help people who may have the virus and do not know they have it to stay home. Cloth face coverings should be changed or washed after use.

Cloth face coverings should be washed or changed after use.

Should cloth face coverings be washed or otherwise cleaned regularly? How often?

Yes, they should be washed or changed regularly.

How does one safely clean/laundry a cloth face covering?

A washing machine should be used in properly washing a cloth face covering.

How does one safely remove a used cloth face covering?

Individuals should be careful not to touch their eyes, nose, and mouth when removing their cloth face covering and wash hands immediately after removing.

For more information: [cdc.gov/coronavirus](http://www.cdc.gov/coronavirus)

HDP 24 x 18 PST144
UV 18 x 12 PST144C
PP 18 x 12 5/pk PST144PP

Use una cubierta de tela para cara para ayudar a desacelerar la propagación del COVID-19

Cómo usar una cubierta de tela para la cara

Las cubiertas de tela para la cara deben:

- estar hechas de material que sea al menos de 2 capas de espesor
- ser aseguradas con lazos o los lazos de las orejas
- no tener una abertura para la cara
- ser capaces de ser manejadas sin tocar la cara

CDC también recomienda el uso de cubiertas de tela para la cara para desacelerar la propagación del virus y ayudar a las personas que pueden tener el virus y no saben si lo tienen a quedarse en casa.

Cloth face coverings should be washed or changed after use.

Should cloth face coverings be washed or otherwise cleaned regularly? How often?

Yes, they should be washed or changed regularly.

How does one safely clean/laundry a cloth face covering?

A washing machine should be used in properly washing a cloth face covering.

How does one safely remove a used cloth face covering?

Individuals should be careful not to touch their eyes, nose, and mouth when removing their cloth face covering and wash hands immediately after removing.

For more information: [cdc.gov/coronavirus](http://www.cdc.gov/coronavirus)

HDP 24 x 18 PST144SP
UV 18 x 12 PST144CSP
PP 18 x 12 5/pk PST144PPSP

Motivational

WE ARE HERE TO HELP YOU.

Please help us by remembering to wear your mask.

This Business/Facility Supports a Safe Working Environment

HDP 18 x 24 PST158
UV 12 x 18 PST158C
PP 12 x 18 5/pk PST158PP

WE ARE HERE TO HELP YOU

Please help us! Remember to wear your mask.

And While You're Here, Don't Forget The Basics:

- Wash your hands in our restrooms
- Maintain social distancing
- Practice respiratory hygiene
- Avoid touching eyes, nose and mouth

This Business/Facility Supports a Safe Working Environment

HDP 18 x 24 PST159
UV 12 x 18 PST159C
PP 12 x 18 5/pk PST159PP

MATERIAL	18 x 12	24 x 18
Heavy-Duty Poster Paper (HDP)	-	\$39.29
Unrippable Vinyl (UV)	\$22.36	-
Poster Paper 5/Pk, (PP)	\$11.60	-

Material Reference Chart:

HDP	Heavy-Duty Poster Paper
UV	Unrippable Vinyl
PP	Poster Paper

Hand Washing



HDP 24 x 18 PST152
UV 18 x 12 PST152C
PP 18 x 12 5/pk PST152PP



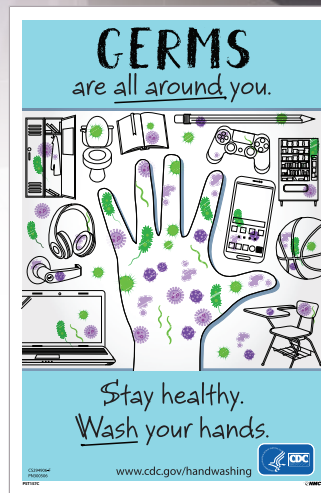
HDP 24 x 18 PST152SP
UV 18 x 12 PST152CSP
PP 18 x 12 5/pk PST152PPSP



HDP 24 x 18 PST156
UV 18 x 12 PST156C
PP 18 x 12 5/pk PST156PP



HDP 24 x 18 PST156SP
UV 18 x 12 PST156CSP
PP 18 x 12 5/pk PST156PPSP



HDP 24 x 18 PST157
UV 18 x 12 PST157C
PP 18 x 12 5/pk PST157PP



HDP 24 x 18 PST157SP
UV 18 x 12 PST157CSP
PP 18 x 12 5/pk PST157PPSP



HDP 18 x 24 PST137
UV 12 x 18 PST137C
PP 12 x 18 5/pk PST137PP



HDP 18 x 24 PST138
UV 12 x 18 PST138C
PP 12 x 18 5/pk PST138PP

MATERIAL	18 x 12	24 x 18
Heavy-Duty Poster Paper (HDP)	-	\$39.29
Unrippable Vinyl (UV)	\$22.36	-
Poster Paper 5/Pk, (PP)	\$11.60	-

Material Reference Chart:

HDP Heavy-Duty Poster Paper
UV Unrippable Vinyl
PP Poster Paper

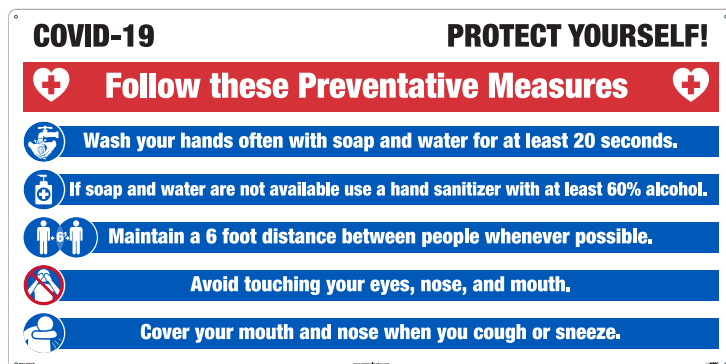
COVID-19 Large Format Signs

Made of lightweight, durable aluminum composite (ACP), these signs convey important messaging at a distance.

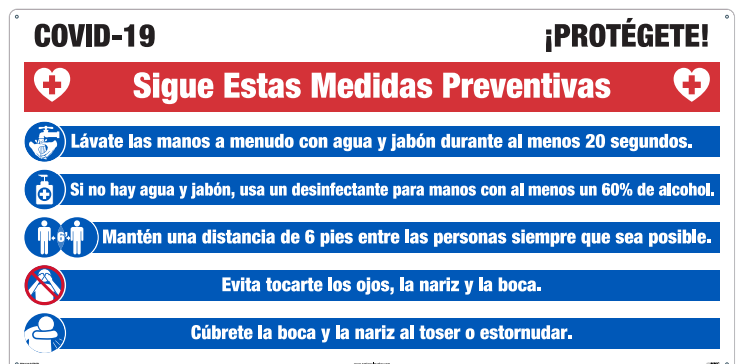
SIZE	LIST
2' x 4'	\$85.87
4' x 8'	\$297.24



2' x 4' English/Spanish M6524ACP
4' x 8' English/Spanish M6548ACP



2' x 4' English M6124ACP
4' x 8' English M6148ACP



2' x 4' Spanish M6124ACPSP
4' x 8' Spanish M6148ACPSP



2' x 4' English M6224ACP
4' x 8' English M6248ACP



2' x 4' Spanish M6224ACPSP
4' x 8' Spanish M6248ACPSP



COVID-19 Mesh Fence Banners

Keep workers and visitors informed and protected by conveying important COVID-19 safety information visible at all times.

- Durable mesh banner with reinforced grommets
- Mesh material allows for air flow
- Ideal for job site/facility use
- Sized specifically for use on fencing



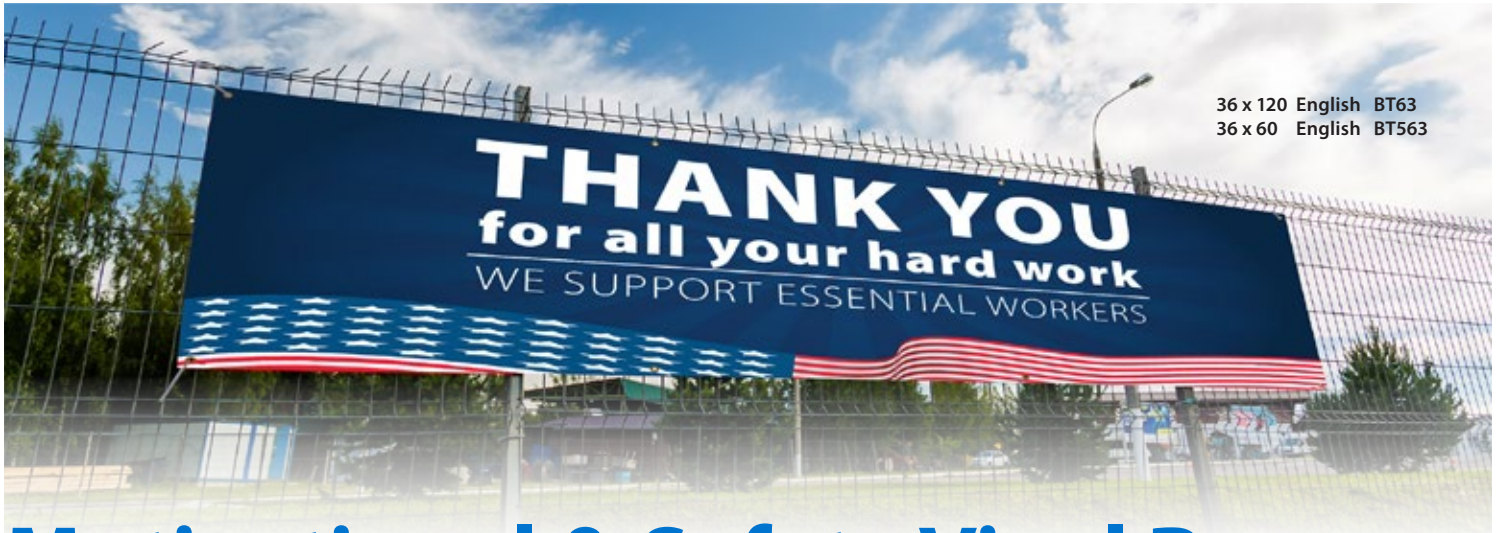
6' x 12' English BT61
 5' x 10' English BT561
 6' x 12' Spanish SPBT61
 5' x 10' Spanish SPBT561

SIZE	LIST
6' X 12'	\$168.98
5' X 10'	\$148.97



6' x 12' English BT62
 5' x 10' English BT562
 6' x 12' Spanish SPBT62
 5' x 10' Spanish SPBT562





36 x 120 English BT63
36 x 60 English BT563

Motivational & Safety Vinyl Banners

Convey your commitment to safety and employee well-being with motivational and informative banners. Durable for outdoor use. Features reinforced grommets.

SIZE	LIST
61 x 120	\$131.78
52 x 104	\$97.35
36 x 120	\$77.77
36 x 60	\$46.91



36 x 120 English BT67
36 x 60 English BT567



36 x 120 English BT64
36 x 60 English BT564



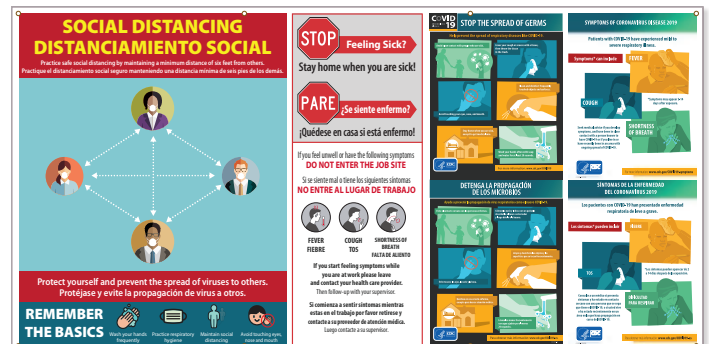
36 x 120 English BT69
36 x 60 English BT569



36 x 120 English BT66
36 x 60 English BT566



52 x 104 English/Spanish BT65
61 x 120 English/Spanish BT565



52 x 104 English/Spanish BT68
61 x 120 English/Spanish BT568



ISO674CL & ISO670CL Shown

Labels, Door & Window Clings

Display labels in high-traffic areas for increased awareness.

Protect employees and remind visitors and contractors about safe practices within your facility or retail location. Labels are ideal for placement on door entrances or on restroom mirrors. Available with clear background for a clean professional look.

Handwashing



PSV 3 x 5 WH4AP
PBR 3 x 5 WH4APR



PSV 3 x 5 N362AP



PSV 3 x 5 N43AP
PBR 3 x 5 N43APR

MATERIAL	QUANTITY	1-24	25+
Pressure Sensitive Removable Vinyl (PBR)	5/Pk	\$11.96	\$10.92
Pressure Sensitive Vinyl (PSV)	5/Pk	\$13.29	\$12.13



2" Dia. ISO270AP
2" Dia. Clear ISO270CL
4" Dia. ISO470AP
4" Dia. Clear ISO470CL
6" Dia. ISO670AP
6" Dia. Clear ISO670CL



2" Dia. ISO217AP
4" Dia. ISO417AP
6" Dia. ISO617AP

MATERIAL	DESCRIPTION	LIST
Pressure Sensitive Vinyl	2" Diameter, 10/Pk	\$8.20
Pressure Sensitive Vinyl	4" Diameter, 5/Pk	\$18.89
Pressure Sensitive Vinyl	6" Diameter, 5/Pk	\$21.47
Pressure Sensitive Vinyl, Clear	2" Diameter, Clear, 10/Pk	\$8.45
Pressure Sensitive Vinyl, Clear	4" Diameter, Clear, 5/Pk	\$19.47
Pressure Sensitive Vinyl, Clear	6" Diameter, Clear, 5/Pk	\$22.13

Clear versions are reverse printed, and can be placed on the interior of windows and glass doors, while being viewed from the other side.



Social Distancing Guidance Labels



PSV 4" Dia. ISO471AP
PSV 6" Dia. ISO671AP



PSV 4" Dia. ISO472AP
PSV 6" Dia. ISO672AP



PSV 4" Dia. ISO473AP
PSV 6" Dia. ISO673AP



PSV 4" Dia. ISO474AP
PSV, Clear 4" Dia. ISO474CL
PSV 6" Dia. ISO674AP
PSV, Clear 6" Dia. ISO674CL



PSV 4" Dia. ISO475AP
PSV, Clear 4" Dia. ISO475CL
PSV 6" Dia. ISO675AP
PSV, Clear 6" Dia. ISO675CL



PSV 4" Dia. ISO476AP
PSV, Clear 4" Dia. ISO476CL
PSV 6" Dia. ISO676AP
PSV, Clear 6" Dia. ISO676CL

MATERIAL	DESCRIPTION	LIST
Pressure Sensitive Vinyl	4" Diameter, 5/Pk	\$18.89
Pressure Sensitive Vinyl	6" Diameter, 5/Pk	\$21.47
Pressure Sensitive Vinyl, Clear	4" Diameter, Clear, 5/Pk	\$19.47
Pressure Sensitive Vinyl, Clear	6" Diameter, Clear, 5/Pk	\$22.13

Clear versions are reverse printed, and can be placed on the interior of windows and glass doors, while being viewed from the other side.



Hard Hat Style Labels

- 2" Diameter
- Adhesive Pressure Sensitive Vinyl (PSV)
- 25/Pack

MATERIAL	1-11	12+
PSV	\$22.29	\$20.42
Reflective	\$24.53	\$22.53



HH20



HH20R
(Reflective)



HH172



HH173



HH48



HH48R
(Reflective)



HH174



HH175

ICE Hard Hat Label

- 100% Waterproof
- 2.75" x .5"
- 25/Pack



PART NO.	LIST
HH205	\$120.23



Don't see what you need?

Our Customer Support Team is here to help you every step of the way.

Reach out today to get started!



Social Distancing Floor Signs

A healthy public drives the American economy. Mark your workplace or retail location to encourage social distancing with NMC's wide selection of adhesive backed, peel-and-stick floor signs.

Choose a material to suit your needs:

TexWalk® Floor Signs



0-6 MONTHS

- Ideal for retail and basic office use
- Removable, leaves no residue
- May be used on low profile carpets
- Print protected with Sign Muscle® coating

Temp-Step™ Non-Slip Floor Signs

6-9 MONTHS

- Ideal for light industrial and retail applications
- Removable, leaves no residue
- Non-slip surface

Walk-On™ Anti-Skid Floor Signs

9+ MONTHS

- Ideal for workplace/industrial applications
- Longer term indoor/short term outdoor use
- Aggressive adhesive
- Anti-skid surface

Social Distancing Floor Markings



TexWalk® 7.625 x 19.625 WFS75TX
Temp-Step™ 8 x 20 WFS75A
Walk-On™ 8 x 20 WFS75



TexWalk® 7.625 x 19.625 WFS74TX
Temp-Step™ 8 x 20 WFS74A
Walk-On™ 8 x 20 WFS74



TexWalk® 7.625 x 19.625 WFS77TX
Temp-Step™ 8 x 20 WFS77A
Walk-On™ 8 x 20 WFS77



TexWalk® 7.625 x 19.625 WFS76TX
Temp-Step™ 8 x 20 WFS76A
Walk-On™ 8 x 20 WFS76



TexWalk® 11.75 x 11.75 WFS79TXYL
Temp-Step™ 12 x 12 WFS79AYL
Walk-On™ 12 x 12 WFS79YL



TexWalk® 11.75 x 11.75 WFS79TXRD
Temp-Step™ 12 x 12 WFS79ARD
Walk-On™ 12 x 12 WFS79RD



TexWalk® 11.75 x 11.75 WFS71TX
Temp-Step™ 12 x 12 WFS71A
Walk-On™ 12 x 12 WFS71



TexWalk® 11.75 x 11.75 WFS72TX
Temp-Step™ 12 x 12 WFS72A
Walk-On™ 12 x 12 WFS72



TexWalk® 11.75 x 11.75 WFS73TX
Temp-Step™ 12 x 12 WFS73A
Walk-On™ 12 x 12 WFS73

	11.75 x 11.75		12 x 12		7.625 x 19.625		8 x 20	
MATERIAL	1-11	12+	1-11	12+	1-11	12+	1-11	12+
TexWalk®	\$25.56	\$23.30	-	-	\$23.02	\$20.93	-	-
Temp-Step™	-	-	\$26.76	\$24.35	-	-	\$24.09	\$22.06
Walk-On™	-	-	\$27.78	\$25.33	-	-	\$25.00	\$22.93



TexWalk® WFS85TXBK
Temp-Step™ WFS85ABK
Walk-On™ WFS85BK



WFS85TXBL
WFS85ABL
WFS85BL



WFS85TXGR
WFS85AGR
WFS85GR



WFS85TXRD
WFS85ARD
WFS85RD



WFS85TXYL
WFS85AYL
WFS85YL

6 X 4 10/PK		
MATERIAL	1-11	12+
TexWalk®	\$69.51	\$63.23
Temp-Step™	\$75.62	\$68.82
Walk-On™	\$91.47	\$83.25

Social Distancing Floor Signs

8" DIA.



TexWalk® WFS83TXRD
 TexWalk® WFS83TXRD10 10pk
 Temp-Step™ WFS83AR
 Temp-Step™ WFS83ARD10 10pk
 Walk-On™ WFS83RD
 Walk-On™ WFS83RD10 10pk



TexWalk® WFS83TXYL
 TexWalk® WFS83TXYL10 10pk
 Temp-Step™ WFS83AYL
 Temp-Step™ WFS83AYL10 10pk
 Walk-On™ WFS83YL
 Walk-On™ WFS83YL10 10pk



TexWalk® WFS82TX
 TexWalk® WFS82TX10 10pk
 Temp-Step™ WFS82A
 Temp-Step™ WFS82A10 10pk
 Walk-On™ WFS82
 Walk-On™ WFS8210 10pk



TexWalk® WFS84TXRD
 TexWalk® WFS84TXRD10 10pk
 Temp-Step™ WFS84ARD
 Temp-Step™ WFS84ARD10 10pk
 Walk-On™ WFS84RD
 Walk-On™ WFS84RD10 10pk



TexWalk® WFS84TXYL
 TexWalk® WFS84TXYL10 10pk
 Temp-Step™ WFS84AYL
 Temp-Step™ WFS84AYL10 10pk
 Walk-On™ WFS84YL
 Walk-On™ WFS84YL10 10pk



MATERIAL	1-11	12+
TexWalk®	\$9.29	\$8.45
TexWalk® 10 Pack	\$79.02	\$71.85
Temp-Step™	\$10.11	\$9.20
Temp-Step™ 10 Pack	\$85.93	\$78.20
Walk-On™	\$12.13	\$11.04
Walk-On™ 10 Pack	\$103.95	\$94.60



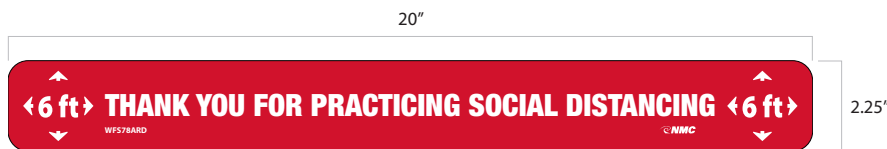
CUSTOM LEGENDS AVAILABLE
 Call us today to get started!



Social Distancing Floor Marking Strips

Create a clear directive for any situation requiring social distance. Let visitors know where to wait to keep an appropriate distance, decreasing confusion and the transmission of airborne illness.

MATERIAL	1-11	12+
TexWalk®	\$5.89	\$5.36
TexWalk® 10 Pack	\$50.07	\$45.59
Temp-Step™	\$6.22	\$5.65
Temp-Step™ 10 Pack	\$52.85	\$48.07
Walk-On™	\$6.84	\$6.22
Walk-On™ 10 Pack	\$58.11	\$52.85



- TexWalk® WFS78TXRD
- TexWalk® WFS78TXRD10 10 pk
- Temp-Step™ WFS78ARD
- Temp-Step™ WFS78ARD10 10 pk
- Walk-On™ WFS78RD
- Walk-On™ WFS78RD10 10 pk



- TexWalk® WFS78TXYL
- TexWalk® WFS78TXYL10 10 pk
- Temp-Step™ WFS78AYL
- Temp-Step™ WFS78AYL10 10 pk
- Walk-On™ WFS78YL
- Walk-On™ WFS78YL10 10 pk



- TexWalk® WFS80TX
- TexWalk® WFS80TX10 10 pk
- Temp-Step™ WFS80A
- Temp-Step™ WFS80A10 10 pk
- Walk-On™ WFS80
- Walk-On™ WFS8010 10 pk



- TexWalk® WFS81TX
- TexWalk® WFS81TX10 10 pk
- Temp-Step™ WFS81A
- Temp-Step™ WFS81A10 10 pk
- Walk-On™ WFS81
- Walk-On™ WFS8110 10 pk

Projector & Illness Prevention Lenses

Communicate important safety messages in a highly visible and impactful way. Great for loading docks, manufacturing floors, retail locations & more.

- Perfect for high traffic areas (pedestrian, forklift & other)
- Zero wear and tear vs. traditional floor signs
- Portable & easy to install
- Fan cooled technology prevents overheating
- Projects up to 262 ft
- Remote control and mounting kit included



PRODUCT	LIST
Projector w/ (1) Stock Lens	\$849.00
Stock Lens	\$67.69/ea.
Custom Lens No order minimums! 1, 2 or full color*	\$129.00/ea

*21 day lead time from time of order



Wait Here

Projector & Lens VSP5
Lens Only VSPL5



6 Feet

Projector & Lens VSP6
Lens Only VSPL6



Social Distancing

Projector & Lens VSP7
Lens Only VSPL7

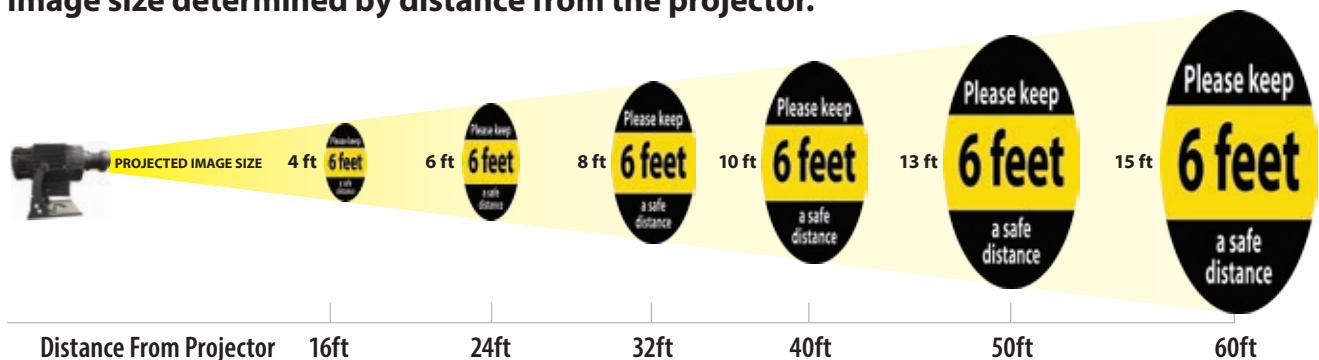


No Handshakes

Projector & Lens VSP8
Lens Only VSPL8

Distance Chart

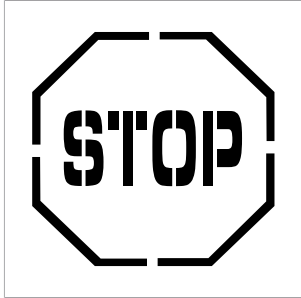
Image size determined by distance from the projector.



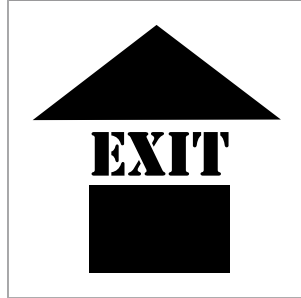
Stencils

Use reusable stencils to mark sidewalks, parking lots or other areas to quickly and easily display lasting messages.

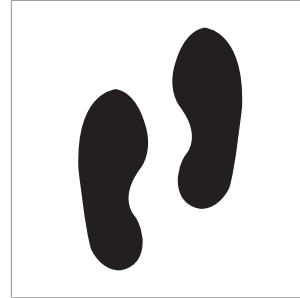
SIZE	LIST
24" x 24"	\$80.20



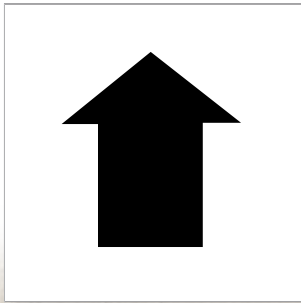
PMS203



PMS209



PMS229



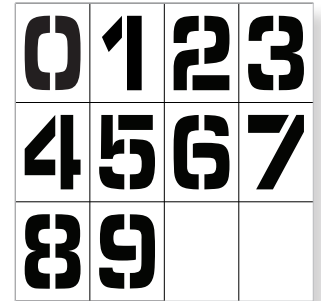
PMS221



PMS55



PMS56



PMN12
Stencil Number Set 0-9

ITEM NO	CHARACTER HEIGHT	LIST
PMN12	12"	\$170.56
PMN36	36"	\$404.38



Distancing & Crowd Control

Waterproof and wear resistant 6 mil vinyl tape applies easily to clean, smooth, dry surfaces with a synthetic rubber resin adhesive and has a temp resistance of -20°F to 175°F. Perfect for:

- Color-coding
- Aisle marking
- Duct sealing
- Abrasion protection
- Joint sealing
- Pipe wrapping
- Light bundling
- Packing
- Safety marking
- Social Distancing



Solid Color Safety Tapes

COLOR	SIZE	PART NO.	1-11	12+
BLACK	2" x 108'	T214	\$11.73	\$9.96
	3" x 108'	T244	\$16.80	\$14.20
WHITE	2" x 108'	T206	\$11.73	\$9.96
	3" x 108'	T236	\$16.80	\$14.20
ORANGE	2" x 108'	T209	\$11.73	\$9.96
	3" x 108'	T239	\$16.80	\$14.20
BLUE	2" x 108'	T210	\$11.73	\$9.96
	3" x 108'	T240	\$16.80	\$14.20
GREEN	2" x 108'	T208	\$11.73	\$9.96
	3" x 108'	T238	\$16.80	\$14.20
YELLOW	2" x 108'	T205	\$11.73	\$9.96
	3" x 108'	T235	\$16.80	\$14.20
RED	2" x 108'	T204	\$11.73	\$9.96
	3" x 108'	T234	\$16.80	\$14.20
BROWN	2" x 108'	T212	\$11.73	\$9.96
	3" x 108'	T242	\$16.80	\$14.20



Striped Safety Tapes

COLOR	SIZE	PART NO.	1-11	12+
	2" x 54'	T20218	\$13.13	\$11.65
	2" x 108'	T20236	\$25.80	\$22.22
	3" x 54'	T22018	\$18.87	\$16.05
	3" x 108'	T22036	\$37.02	\$31.42
	2" x 54'	T20718	\$13.13	\$11.65
	2" x 108'	T20736	\$25.80	\$22.22
	2" x 54'	T20118	\$13.13	\$11.65
	2" x 108'	T20136	\$25.80	\$22.22
	3" x 54'	T22118	\$18.87	\$16.05
	3" x 108'	T22136	\$37.02	\$31.42
	2" x 54'	T20318	\$13.13	\$11.65
	2" x 108'	T20336	\$25.80	\$22.22
	3" x 54'	T22318	\$18.87	\$16.05
	3" x 108'	T22336	\$37.02	\$31.42
	2" x 54'	T20418	\$13.13	\$11.65
	2" x 108'	T20436	\$25.80	\$22.22
	3" x 54'	T22418	\$18.87	\$16.05
	3" x 108'	T22436	\$37.02	\$31.42
	2" x 54'	T20918	\$13.13	\$11.65
	2" x 108'	T20936	\$25.80	\$22.22
	3" x 54'	T22918	\$18.87	\$16.05
	3" x 108'	T22936	\$37.02	\$31.42
	2" x 54'	T20818	\$13.13	\$11.65
	2" x 108'	T20836	\$25.80	\$22.22
	3" x 54'	T22818	\$18.87	\$16.05
	3" x 108'	T22836	\$37.02	\$31.42

Marking Tape Floor Applicator

Mark specific areas to promote safety.

- Stable, stand-alone design
- Holds up to a 4"x 180' roll of floor marking or a 4"x 150' roll of pavement marking tape
- Large wheel base for smooth tape placement
- Heavy duty construction
- Minimal assembly required

PART NO.	PRICE
FTA01	\$223.29



Distancing & Crowd Control

Built to withstand industrial traffic, 30 & 50 mil thick floor marking tapes provide a durable solution that goes down easy and cleans up just as well.

- Designed for long-term floor marking
- Smooth, easy to clean, slip resistant
- Dual beveled edges allow industrial wheels to roll over smoothly (50 mil option)
- Leaves no residue when removed
- Faster to install than paint, with zero downtime

Durable Floor Tape

- 30 mil thickness
- Material: Vinyl



COLOR	PART NO.	SIZE	LIST
YELLOW	DT2Y	2" X 100'	\$125.00
	DT4Y	4" X 100'	\$193.00
RED	DT2R	2" X 100'	\$125.00
	DT4R	4" X 100'	\$193.00
BLUE	DT2B	2" X 100'	\$125.00
	DT4B	4" X 100'	\$193.00
GREEN	DT2G	2" X 100'	\$125.00
	DT4G	4" X 100'	\$193.00

Heavy-Duty Floor Tape

- 50 mil thickness
- Material: PVC



COLOR	PART NO.	SIZE	1-11	12+
YELLOW	HDT2Y	2" X 100'	\$235.00	\$230.00
	HDT3Y	3" X 100'	\$262.00	\$258.00
	HDT4Y	4" X 100'	\$272.00	\$268.00
RED	HDT2R	2" X 100'	\$235.00	\$230.00
	HDT3R	3" X 100'	\$262.00	\$258.00
	HDT4R	4" X 100'	\$272.00	\$268.00
BLUE	HDT2B	2" X 100'	\$235.00	\$230.00
	HDT3B	3" X 100'	\$262.00	\$258.00
	HDT4B	4" X 100'	\$272.00	\$268.00
GREEN	HDT2G	2" X 100'	\$235.00	\$230.00
	HDT3G	3" X 100'	\$262.00	\$258.00
	HDT4G	4" X 100'	\$272.00	\$268.00
BLACK	HDT2BK	2" X 100'	\$235.00	\$230.00
	HDT3BK	3" X 100'	\$262.00	\$258.00
	HDT4BK	4" X 100'	\$272.00	\$268.00
ORANGE	HDT2OR	2" X 100'	\$235.00	\$230.00
	HDT3OR	3" X 100'	\$262.00	\$258.00
	HDT4OR	4" X 100'	\$272.00	\$268.00
 YELLOW BLACK STRIPE	HDT2BKYL	2" X 100'	\$257.00	\$253.00
	HDT3BKYL	3" X 100'	\$284.00	\$280.00
	HDT4BKYL	4" X 100'	\$310.00	\$306.00

Floor Markings

Ideal for directing foot traffic and creating pathways.

- Includes 25 per pack
- 50 mil thick for long-term application & use
- Designed to withstand industrial traffic
- Rubber based pressure sensitive adhesive
- Service temp range -10°F to 150°F
- Application temp range 40°F to 150°F

T-Markers

PART NO.	COLOR	PRICE
LN125	Red	\$59.74
LN126	Yellow	\$59.74
LN127	Blue	\$59.74
LN128	Green	\$59.74
LN129	Black w/ White Stripe	\$67.25
LN130	Black w/ Yellow Stripe	\$67.25



6" x 6" x 2"

Corner Marker Angles

PART NO.	COLOR	PRICE
LN119	Red	\$59.74
LN120	Yellow	\$59.74
LN121	Blue	\$59.74
LN122	Green	\$59.74
LN123	Black w/ White Stripe	\$67.25
LN124	Black w/ Yellow Stripe	\$67.25



6" x 6" x 2"

Marking Dots

PART NO.	COLOR	PRICE
LN131	Red	\$42.34
LN132	Yellow	\$42.34
LN133	Blue	\$42.34
LN134	Green	\$42.34
LN135	White	\$42.34



3.5" Dia.

Footprints

PART NO.	COLOR	LIST
LN114	Red	\$98.45
LN115	Yellow	\$98.45
LN116	Blue	\$98.45
LN117	Green	\$98.45
LN118	White	\$98.45



3.5" x 9.5"

A-Frame Signs & Stands

Signage for Outdoor Use

NMC's Deluxe A-Frame Sidewalk & Parking lot signs are ideal for directing pedestrian and motorized traffic.

- Stand Measures 45" x 25"
- Sign Measures 36" x 24"
- Includes one sign
- Double-sided (stand can hold two signs, one on each side) – additional signs sold separately
- High-density impact plastic
- Sign made of corrugated plastic (sign is removable)
- No tools, tape or screws needed – simply fold-out and go
- Custom messages available

DESCRIPTION	LIST
Sign & Stand	\$191.30

DESCRIPTION	LIST
Sign	\$48.16



Sign & Stand: SFS114C-KIT
Sign Only: SFS114C



Sign & Stand: SFS115C-KIT
Sign Only: SFS115C



Sign & Stand: SFS116C-KIT
Sign Only: SFS116C



Sign & Stand: SFS110C-KIT
Sign Only: SFS110C



Sign & Stand: SFS111C-KIT
Sign Only: SFS111C



Sign & Stand: SFS112C-KIT
Sign Only: SFS112C



Sign & Stand: SFS113C-KIT
Sign Only: SFS113C

Double Sided, Reversible Floor Signs



FS42



FS43



FS44



FS45



FS46



FS47



FS48



FS49

MATERIAL	1-11	12+
19 x 12 Corrugated Polyethylene	\$21.87	\$20.04

FS46 Shown



Cones & Cone Top Signs



CS29



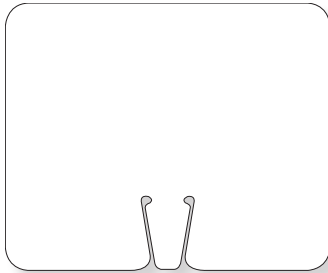
CS30



CS31



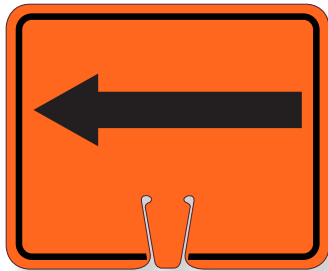
CS15



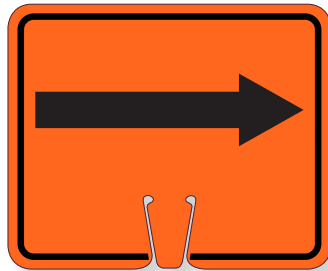
CS2



CS1



CS4



CS5



CS8



CS9

10.375 X 12.625	
Material	List (EA)
Rigid Plastic	\$27.22



Cone & Cone Top Sign sold separately



Cone Top Signs fit TPC2 only



TPC2



CS15

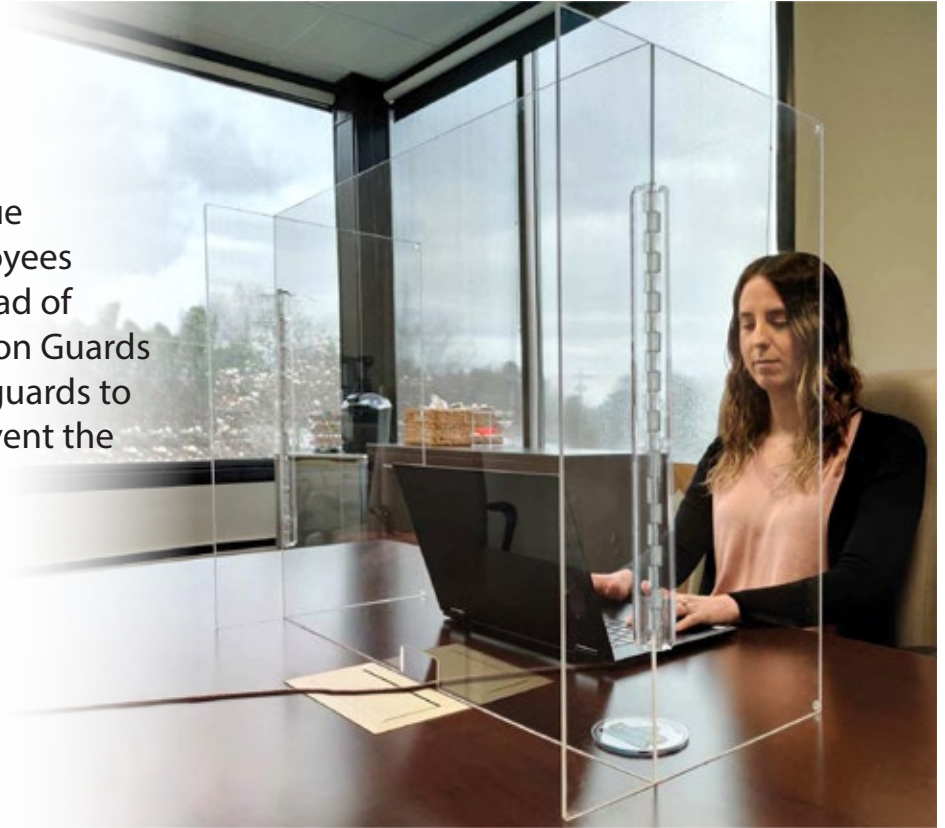
ITEM NO.	SIZE	LIST
TPC2	Orange, 18 x 10.5. 1/case	\$15.63

ITEM NO.	DESCRIPTION	LIST
TFS304	Tri-View, 40 x 15, 3/case	\$200.18

Work Station Guards

Open office concepts present unique challenges as employers and employees are sensitive to controlling the spread of communicable diseases. Work Station Guards provide a stop-gap solution. Place guards to help keep workers healthy and prevent the spread of viruses.

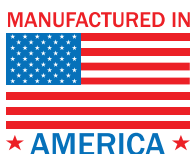
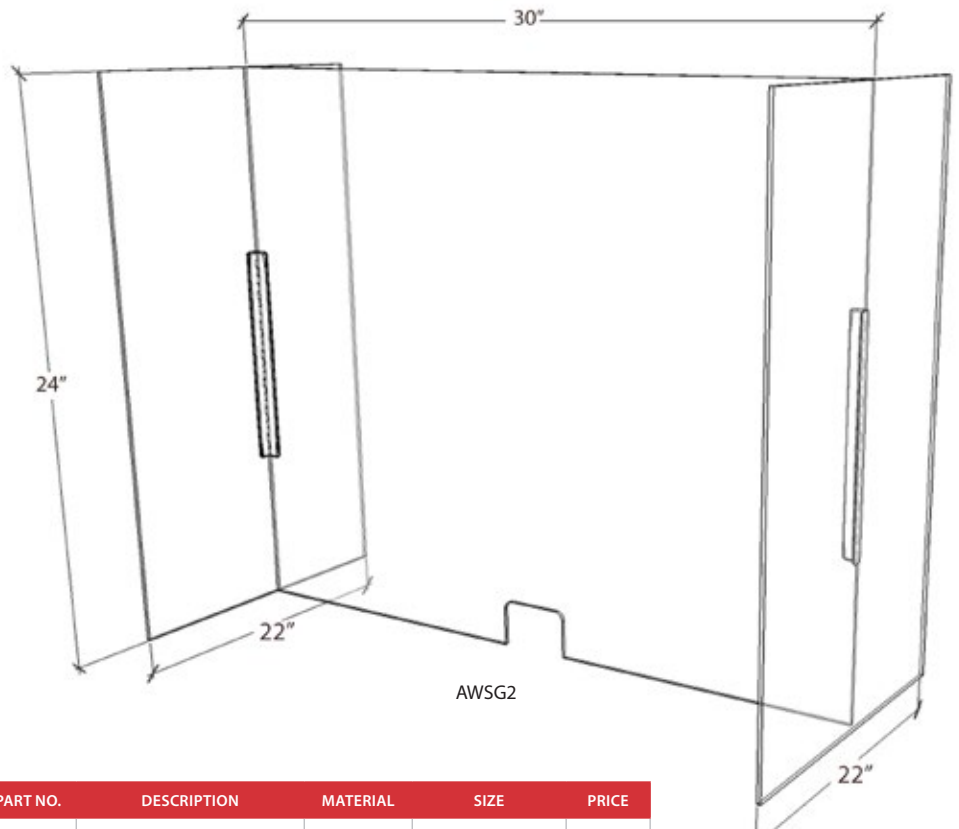
- Made of acrylic
- Easy to clean
- Portable/storable
- Sturdy 3-sided hinge design
- Fully customizable



Don't see what you need?

Our Customer Support Team is here to help you every step of the way.

Reach out today to get started!



PART NO.	DESCRIPTION	MATERIAL	SIZE	PRICE
AWSG1	Foldable Work Station Shield	Acrylic .177	24"h X 30"w, 14"d	\$184.62
AWSG2	Foldable Work Station Shield	Acrylic .177	24"h X 30"w, 22"d	\$215.38

Acrylic PPE Dispensers

Workers need to use personal safety protection everyday, and they need easy access to PPE on site with convenient dispensers.

- Widest selection of standard dispensers
- Convenient and economical
- Hassle-free ordering with FAST shipping
- Superior acrylic quality
- American made
- No Minimums
- Most Styles include free identification labels



Glove Dispenser

Comes in 3 sizes to accommodate any range of needs.

- 15 x 10.75 holds 3 boxes of gloves
- 10 x 10.75 holds 2 boxes of gloves
- 5 x 10.75 holds 1 box of gloves
- Table or wall mount

ITEM NO	SIZE	LIST
AGBT	15 x 10.75	\$56.56
AGBD	10 x 10.75	\$50.24
AGBS	5 x 10.75	\$34.91



AGBT

Visitor Spec Dispenser

- Features bottom door to keep glasses in place
- Dimensions: 18 x 8 x 4
- Holds up to approx. 20 pairs
- Table or wall mount

ITEM NO.	PRICE
ASG-D	\$94.91



ASG-D

Miscellaneous PPE Dispenser

Store a wide range of PPE supplies such as bouffants, booties, gloves, earplugs, etc.

- Size: 10 x 10 x 10
- 4" round opening in front for easy access
- Table or wall mount

ITEM NO	LIST
ADB	\$100.55



ADB

Mini Multi-Use Dispenser with Cover

Easy to store PPE dispenser protects contents with a full cover.

- Size: 12 x 6.5
- Lid protects PPE from airborne contaminants, dust & debris
- Table or wall mount

ITEM NO.	LIST
ADM1	\$99.33



ADM1



Customize your dispensers

Get your message noticed with custom designed acrylic and label options!

Biohazard

Biohazard areas can be dangerous due to many hazards not being visible to the human eye. Clearly mark biohazard areas with proper identification products including floor signs, labels, signs, and barricade tape.

Double-Sided Floor Signs

- Made of lightweight 4 mm corrugated polyethylene
- Printed on four sides, one message on the outside and another message on the inside
- Water-proof
- Folds easily for convenient storage

19 x 12		
DESCRIPTION	1-11	12+
Warning Biohazard Floor Sign	\$21.87	\$20.04



FS37



Signs & Labels

Includes the universally recognized biohazard symbol and meet OSHA's marking requirement in standard 1910.1030 for bloodborne pathogens.



PSP 1 x 3, 500/Roll WOL6



PSP 1 x 3, 500/Roll WOL7



PSV 7 x 7 S92P
RB 7 x 7 S92R



PSV 7 x 7 S93P
RB 7 x 7 S93R



PSV 4 x 4, 5/Pk S52AP
PSV 7 x 7 S52P
RB 7 x 7 S52R
PSP 3 x 3, 500/Roll S52RL

MATERIALS	1 x 3		3 x 3		4 x 4		7 X 7		10 X 18	
	1-24	25+	1-24	25+	1-24	25+	1-5	6+	1-5	6+
Pressure Sensitive Vinyl (PSV)	-	-	-	-	\$18.89	\$17.31	\$5.89	\$5.11	\$9.87	\$9.07
Pressure Sensitive Paper (PSP)	\$27.91	\$25.56	\$49.62	\$45.49	-	-	-	-	-	-
Rigid Plastic	-	-	-	-	-	-	\$7.71	\$7.11	\$17.04	\$15.60



PSV 10 x 18 SPSA52P
RB 10 x 18 SPSA52R

Tags

The use of tags is permitted for compliance, as outlined in OSHA standard 1910.145. Biohazard tags measuring 6" x 3" are versatile when labels may not be the ideal solution.

DESCRIPTION	1-24	25+
Biohazard Tag, Pack Of 25	\$37.36	\$34.27



RPT54

Barricade Tape

Biohazard barricade tape measures 3" by 1000-ft long with a continuous repeat of the text shown below.



PT40

DESCRIPTION	1-24	25+
Biohazard Barricade Tape	\$22.52	\$18.03

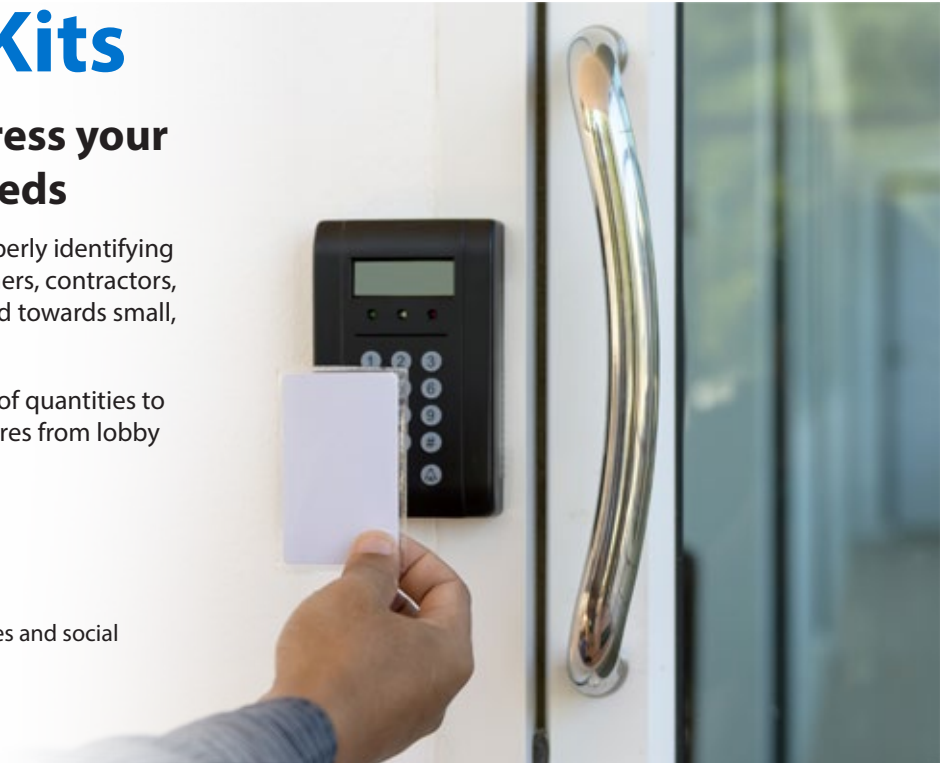
Back to Work Kits

Key products kitted to address your immediate back to work needs

Kits provide the essentials you need to begin properly identifying your facility as the doors open to workers, customers, contractors, vendors and others. Choose from three kits geared towards small, medium, or large facilities.

Each kit contains applicable products in a variety of quantities to communicate important health and safety measures from lobby to loading dock.

- Be ready to re-open your business
- Provide clear, professional messaging
- Product assortments based on best sellers
- Kits contain handwashing signs, posters, floor tapes and social distancing floor signs



Small Kit

ITEM NO.	LIST
BWK01	\$299.00



- (1) 5/Pack of 6" dia. clear PSV, NO HANDSHAKE labels
- (1) 10 x 14 Rigid Plastic, NOTICE PRACTICE SOCIAL DISTANCING sign
- (1) 14 x 10 PSV, NOTICE FACE MASK REQUIRED sign
- (2) 5/Packs of 3 x 5 PSV, NOTICE WASH YOUR HANDS BEFORE RETURNING TO WORK labels
- (4) 7 x 10 Rigid Plastic, WASH YOUR HANDS signs
- (1) 18 x 24 Heavy-Duty Poster Paper, WASH YOUR HANDS posters
- (1) 24 x 18 Heavy-Duty Poster Paper, STOP THE SPREAD OF GERMS poster
- (2) Rolls of 2 x 108' Yellow 6-mil Floor Tape
- (2) 12 x 12 SOCIAL DISTANCING floor signs in Walk-On™ material
- (2) 12 x 12 PLEASE KEEP A SAFE DISTANCE floor signs in Walk-On™ material

Medium Kit

ITEM NO.	LIST
BWK02	\$599.00



- (2) 5/Packs of 6" dia. Clear PSV, NO HANDSHAKE labels
- (2) 10 x 14 Rigid Plastic, NOTICE PRACTICE SOCIAL DISTANCING signs
- (2) 5/Packs of 3 x 5 PSV, NOTICE WASH YOUR HANDS BEFORE RETURNING TO WORK labels
- (6) 7 x 10 Rigid Plastic, WASH YOUR HANDS signs
- (4) 14 x 10, PSV, NOTICE FACE MASK REQUIRED signs
- (1) 5/Pack of 18 x 12, Paper, USE OF CLOTH FACE COVERINGS posters
- (1) 5/Pack of 18 x 12, Paper, GUIDELINES FOR WEARING A MASK posters
- (4) 12 x 18 Unrippable Vinyl, WASH YOUR HANDS posters
- (2) 24 x 18 Heavy-Duty Poster Paper, STOP THE SPREAD OF GERMS poster
- (3) Rolls of 2 x 108' Yellow 6-mil Floor Tape
- (2) 10/Packs of 12 x 12 SOCIAL DISTANCING floor signs in Walk-On™ material
- (2) 2.25 x 20 THANK YOUR FOR PRACTICING SOCIAL DISTANCING floor strips in of Temp-Step™ material
- (2) 12 x 12 PLEASE KEEP A SAFE DISTANCE floor signs in Walk-On™ material
- (2) 6 x 9 Plastic HAND SANITIZING STATION 3D wall signs

Large Kit

ITEM NO.	LIST
BWK03	\$999.00

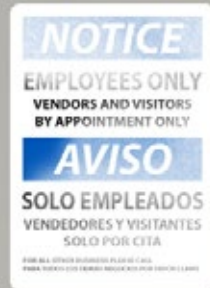


- (2) 5/Packs of 6" dia. clear PSV, NO HANDSHAKE labels
- (4) 10 x 14 Rigid Plastic, NOTICE PRACTICE SOCIAL DISTANCING signs
- (4) 5/Packs of 3 x 5 Removable PSV, NOTICE WASH YOUR HANDS BEFORE RETURNING TO WORK labels
- (6) 7 x 10 Rigid Plastic, WASH YOUR HANDS signs
- (2) 14 x 10 Rigid Plastic, TEMPERATURE CHECK STATION signs
- (6) 14 x 10, PSV, NOTICE FACE MASK REQUIRED signs
- (4) 5/Packs of 18 x 12 Paper, USE OF CLOTH FACE COVERINGS posters
- (2) 5/Packs of 8 x 12 Paper, GUIDELINES FOR WEARING A MASK posters
- (2) 18 x 12 Unrippable Vinyl, WELCOME NO HAND SHAKES posters
- (2) 18 x 24 Heavy Duty Poster Paper, WASH YOUR HANDS posters
- (4) 18 x 24 Heavy Duty Poster Paper, STOP THE SPREAD OF GERMS posters
- (4) Rolls of 2 x 108' Yellow 6-mil Floor Tape
- (4) 12 x 12 SOCIAL DISTANCING floor signs in Walk-On™ material
- (3) 10/Packs of 2.25 x 20 THANK YOUR FOR PRACTICING SOCIAL DISTANCING floor strips in Temp-Step™ material
- (4) 12 x 12 PLEASE KEEP A SAFE DISTANCE floor signs in Walk-On™ material
- (4) 6 x 9 Plastic HAND SANITIZING STATION 3D wall signs



THE LAST SIGN YOU WILL EVER BUY™

Sign Muscle® is Polymer Coating that preserves the life of your NMC signs and labels.



Resists Fading!



Make Clean Up Easy!



Easily Restored Like New

**Many items in this catalog
include Sign Muscle® for free!**

These sign and label material references include Sign Muscle®.

- PSV** Pressure Sensitive Vinyl
- PBR** Removable Adhesive Backed Vinyl
- RB** Rigid Plastic
- AL** Aluminum

Additional products such as TexWalk® and Large Format Signs also include Sign Muscle®.

Protection Applied Free, Guaranteed for Life!

